

Minnesota Sports Facilities Authority in Collaboration with the Minnesota Vikings
Minneapolis, MN

New Multipurpose Stadium

REQUEST FOR PROPOSALS – ARCHITECTURAL AND ENGINEERING SERVICES

ADDENDUM NO. TWO

August 24, 2012

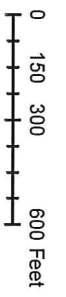
This Addendum forms a part of the contract Documents and modifies the proposal Documents dated August 10, 2012. Acknowledge receipt of this Addendum in the proposal response. Failure to do so may subject Proposer to disqualification.

This Addendum consists of 4 pages.

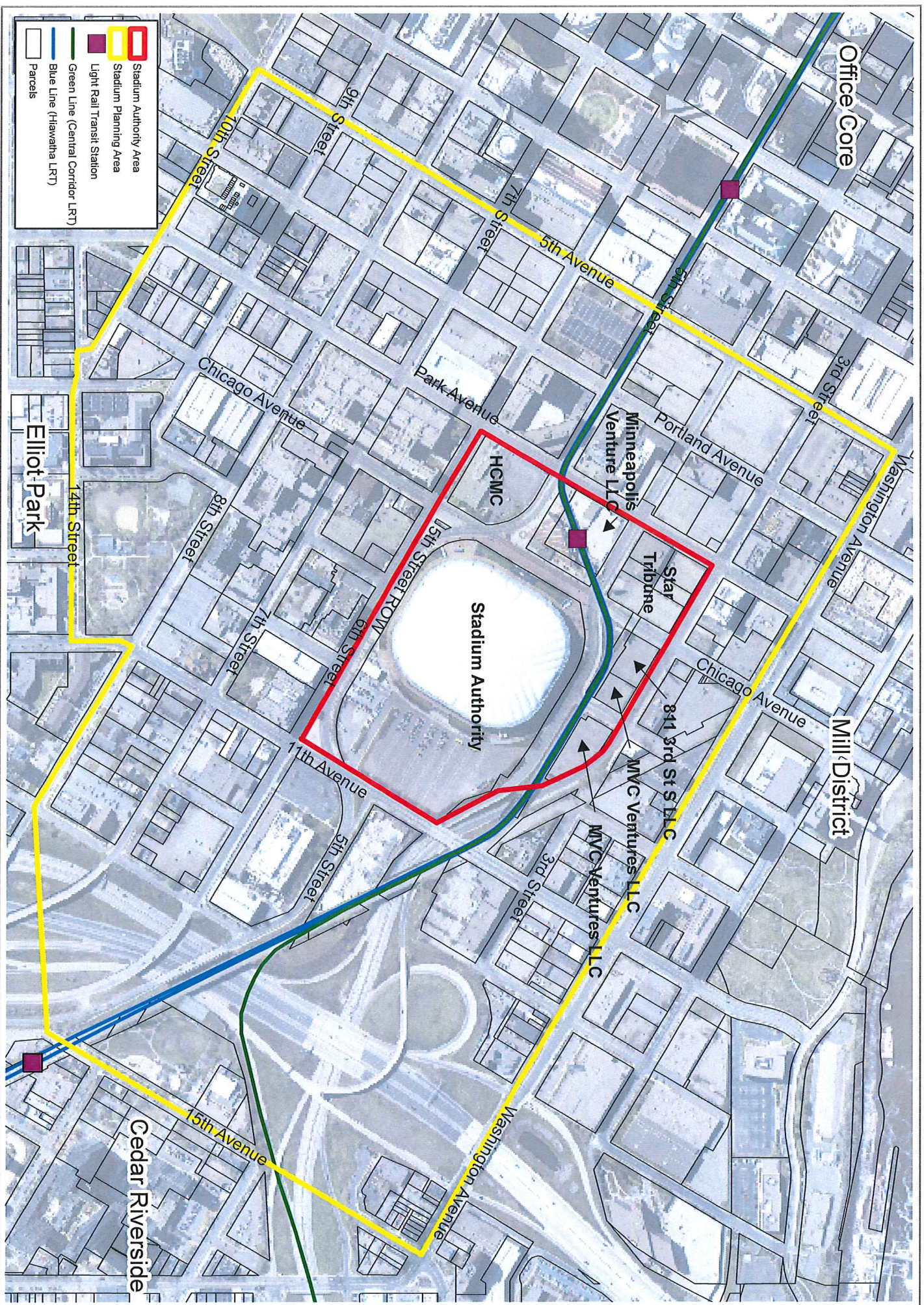
Changes to the Proposal

1. Add: Exhibit B-1 City of Minneapolis Plan of Stadium Area (Attached)
2. Add: Response to Submitted Questions (as of 8/22/2012 4pm) – Attached

END OF ADDENDUM TWO



	Stadium Authority Area
	Stadium Planning Area
	Light Rail Transit Station
	Green Line (Central Corridor LRT)
	Blue Line (Hiawatha LRT)
	Parcels



Vikings Stadium Area — EXHIBIT B-1

City of Minneapolis
Community Planning and Economic Development - Planning Division



Data compiled from best available sources. The City of Minneapolis assumes no legal responsibility for the accuracy of this map. For illustrative

Minnesota Sports Facilities Authority in Collaboration with the Minnesota Vikings
Minneapolis, MN

New Multipurpose Stadium

REQUEST FOR PROPOSALS – ARCHITECTURAL AND ENGINEERING SERVICES

ADDENDUM NO. TWO

August 24, 2012

Responses to Questions Submitted

1. On page 4 of Exhibit A, Preliminary Program, item e. Project Requirements, note the reference “Space for NFL team museum and Hall of Fame.”
 - a. Should we only provide shell space for the museum or a fully developed museum space? We see in Addendum #1, page 14, the requirements for Team Store design including retail furniture and fixtures, and for Team Hall of Fame design including exhibits and interactive displays. We did not see the museum identified in Addendum #1.

Response: The Architect shall plan for the provision of shell space for a Team Hall of Fame. The Development and Design of the Team Hall of Fame is a separate subject of discussions between the Team and the Authority. The museum is the same as the Team Hall of Fame not two separate spaces.

2. On page 6 of Exhibit A, Preliminary Program, item e. Club Seating/Club Lounge, note the reference “Total capacity approximately 7,500 club seats based upon market study” –
 - a. Has the market study been completed?
 - b. If not, when is it anticipated to be completed?
 - c. AND what other premium amenities have been addressed in the Market Study, such as; Suites and Loge Box Seating?

Response: The market study by the Team is currently in process. The results of the study will be provided to the successful Architectural firm upon completion. It will include all premium seating options.

3. How many representatives of the Authority, the Team and others (such as consultants and guests) are anticipated to be in attendance for interviews?

Response: Plan on 25 persons in attendance.

4. Both the RFP and the Scope of Services clearly lay the expectations for services including specifically Food Service design. Exhibit F “Outline of Compensation for Architecture

/Engineering Services” however does not identify a category for Food Service. Is there a way the Authority would like us to address consultants that may be required by the Scope document but not listed in Exhibit F? We are told not to modify the document and do not want to be discounted if we do.

Response: Include in Exhibit F, line 17. Proposers can breakout any costs by attachment to that Exhibit.

5. Will the design teams be required or encouraged to follow State of Minnesota guidelines and/or City of Minneapolis guidelines for the utilization of Targeted/WBE Businesses?

Response: This will be the subject of a future addendum to this RFP.

6. In the “Reference Only” document entitled “Exhibit 1 - Description of Designated Services for Architecture/Engineering Services”, on Page 10 under .29 it states “.04 Security (system and locations to be determined by Developer)”. Does this mean that the Security System design will be furnished by others, or should it be considered to be a part of the AE Team’s design disciplines?

Response: The Security System Design will be part of the Architectural/Engineering design disciplines.

7. Since Uni-Systems designs and then also builds operable roof and wall driving mechanisms, we have requested Uni-Systems to submit a fee proposal through 50% DD to us. After completion of 50% DD documents, Uni-Systems would then contract with the CM at Risk or Design/Build contractor depending upon which way the MSFA decides to proceed for completion of the remainder of DD, Construction Documents and CA phases of service. We have used this in other projects. A complete design through construction documents and construction administration services increases substantially Uni-Systems fee quite different from this method of delivery. Is it acceptable for us to submit the operable roof and wall mechanism consultant’s fees through 50% DD or do the Vikings and MSFA desire a full services fee through Construction Services to be submitted by HKS for Uni-Systems?

Response: Submit the full services fee as your submittal to Exhibit F. Provide a breakout cost for the 50% Design Development level as an attachment to Exhibit F.