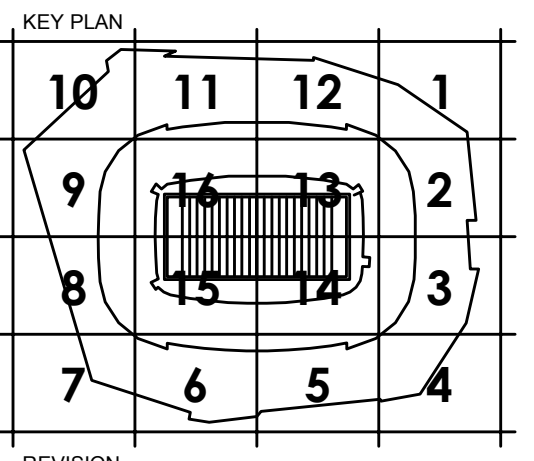


- OWNER**
MINNESOTA SPORTS FACILITIES AUTHORITY
900 SOUTH 5th STREET, MINNEAPOLIS, MN 55415
- OWNER**
MINNESOTA WIKINGS FOOTBALL, LLC
9500 VIKING DR., EDEN PRAIRIE, MN 55344
- ARCHITECT / INTERIORS / BRANDING**
HKS, INC.
1919 MORNING AVENUE, DALLAS, TX 75201
- ASSOCIATE ARCHITECT - SKIN**
STUDIO FIVE ARCHITECTS
332 FIRST AVE. N. SUITE 600, MINNEAPOLIS, MN 55401
- MEP / TECHNOLOGY**
M.E. ENGINEERS, INC.
10555 WEST 43rd AVE., WHEAT RIDGE, CO 80033
- STRUCTURAL ENGINEER**
THORNTON TOMASETTI
12750 MERIT DR., SUITE 750, LB-7, DALLAS, TX 75251
- CIVIL ENGINEER**
EVS, INC.
10250 VALLEY VIEW, SUITE 123, EDEN PRAIRIE, MN 55344
- LANDSCAPE ARCHITECT**
OSLAND AND ASSOCIATES
115 WASHINGTON AVE. N., MINNEAPOLIS, MN 55401
- AUDIO VISUAL CONSULTANTS**
ACOUSTIC DIMENSIONS
15508 WRIGHT BROTHERS DR., ADDISON, TX 75001
- MEP**
HURM
4801 SPRING VALLEY RD., DALLAS, TX 75244
- CODE / FIRE PROTECTION**
FSC, INC.
9226 INDIAN CREEK, SUITE 300, OVERLAND PARK, KS 66210
- FOOD SERVICE**
RICCA NEWMARK
5325 SOUTH VALENTIA, GREENWOOD VLG, CO 80111
- LIGHTING CONSULTANT**
PH DC
1425 DUTCH VALLEY PL., C & D, ATLANTA, GA 30324
- WAYFINDING**
SELECT PERSONA DESIGN
432 CULVER BLVD., PLAYA DEL REY, CA 90293
- VERTICAL TRANSPORTATION**
ELEVATOR ADVISORY GROUP
14530 PENNINGTON AVE., SAINT PAUL, MN 55124
- ADA CONSULTANT**
ED ROETHER CONSULTING, LLC
2390 MISSOURI BELLEVUE, LOUISBURG, KS 66503
- WIND / SNOW CONSULTANT**
ROWAN, WILLIAMS, DAVIES, AND BROWN, INC.
650 WOODLAWN RD., WY. QUELPH, ON CANADA N1K 1B8
- BUILDING ENVELOPE CONSULTANT**
THORNTON TOMASETTI - BUILDING SKIN PRACTICE
330 N. WABASH AVE., SUITE 1500, CHICAGO, IL 60611
- FAÇADE ACCESS CONSULTANT**
SERCH BATES, INC.
8889 LINCOLN ST., SUITE 105, LITTLETON, CO 80122

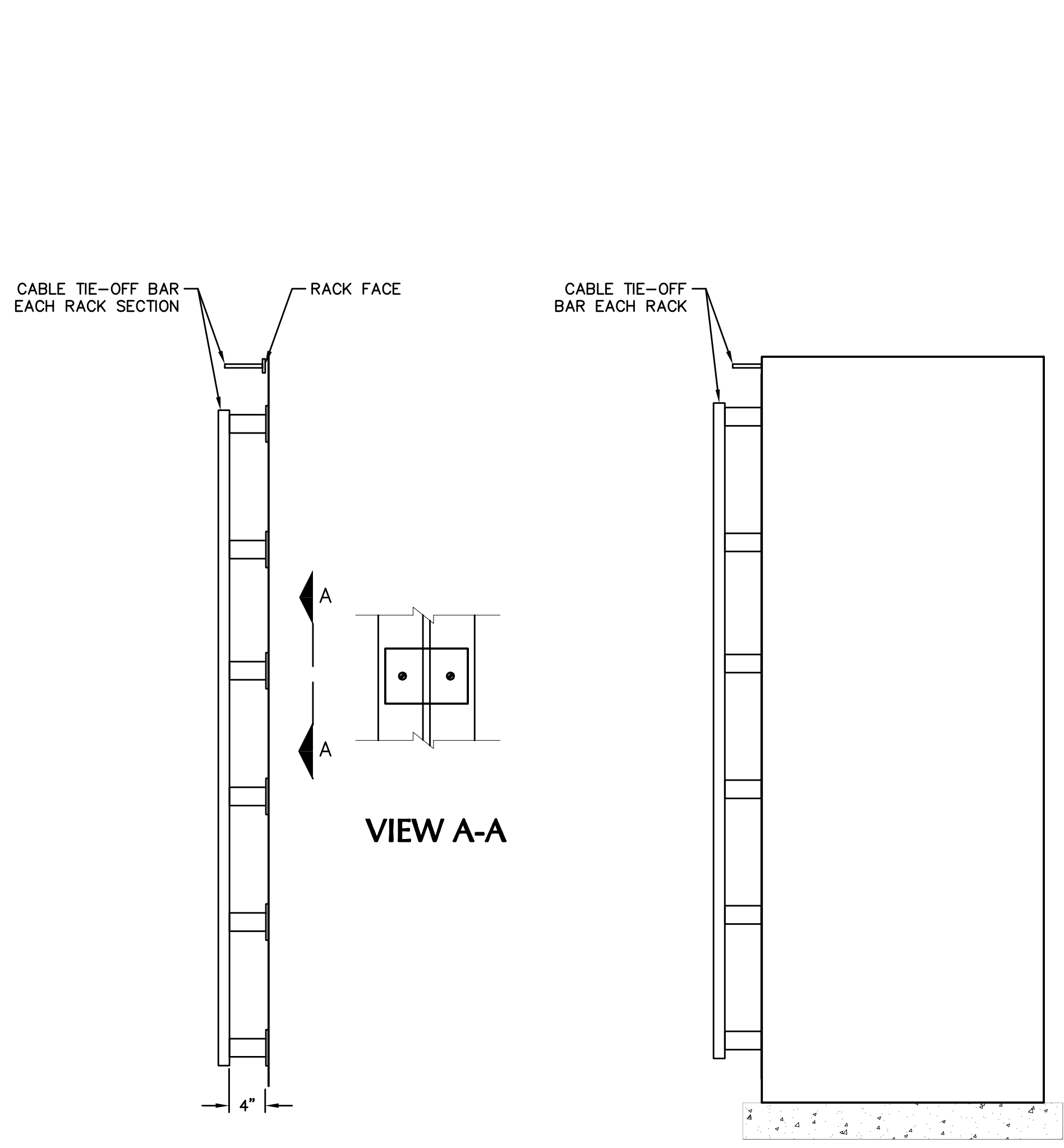


NO.	DATE	REVISION

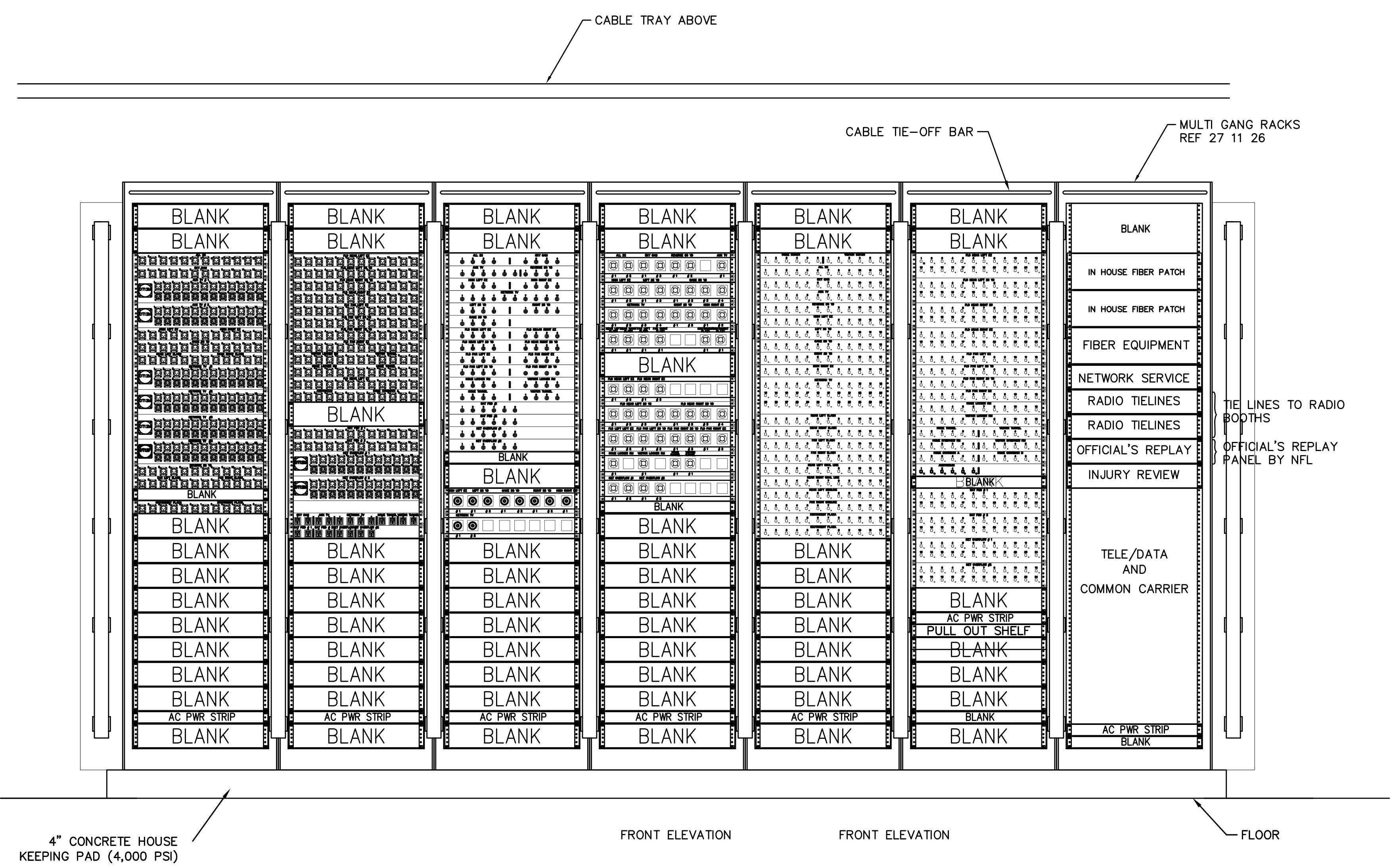
HKS PROJECT NUMBER
16246.000
 DATE
MAY 2, 2014
 ISSUE
CCD-060

SHEET TITLE
**BROADCAST
 RACK DETAILS**

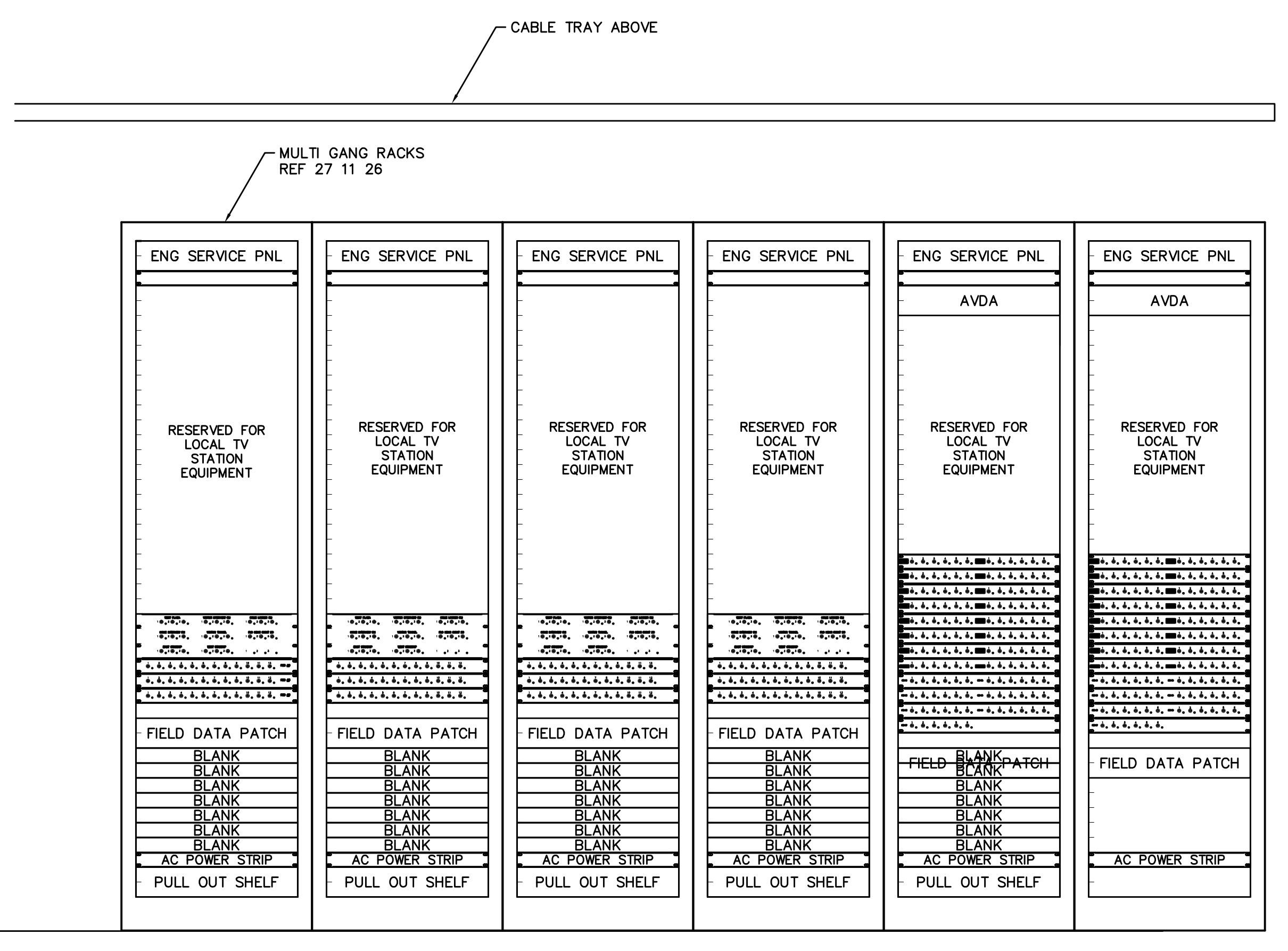
SHEET NO.
ES8.08



03 NETWORK RACK SECTION
 1" = 1'-0"
 NOTES:
 1. PROVIDE STAINLESS STEEL HARDWARE FOR MOUNTING TIE OFF BARS TO EQUIPMENT RACKS.



02 NETWORK INTERCONNECT ELEVATION
 1" = 1'-0"
 NOTES:
 1. REFERENCE ES8.72 FOR ENLARGED VIEW OF NFL RACK LAYOUT. REFERENCE 1/ES3.31 FOR RACK LOCATION.



01 ENG INTERCONNECT ELEVATION
 1" = 1'-0"

PLOT DATE: TEMPLATE VERSION