

ADDENDUM NO. TWO  
December 22, 2014

This Addendum forms a part of the contract Documents and modifies the original plans and specifications dated December 10, 2014.

Acknowledge receipt of this Addendum on the Proposal Form. Failure to do so may subject Proposer to disqualification.

Reference made to Specifications and Drawings shall be used as a guide only. When Specification Sections or drawings are issued, changes made in Specifications or on Drawings will take precedence over narrative explanation below. Proposer shall determine for themselves the work affected by Addendum items.

It is the desire of the MFSA and the Minnesota Vikings to explore the opportunity for Ultra High Definition LED Video Walls in the Fire and Ice Clubs. There is currently an AV package (attached) that utilizes Stackable 4K projectors in these locations, we would like to explore the use of a sub 2mm LED pixel in the place of the 4K projectors. The dimensions of the displays in each club will be the same size as the projector screens (28' x 9'). See the attached renderings for the conceptual, plan and schematic drawings. It is currently drawn as four (4) hard wired, mounted cameras in the seating bowl to a control rack for the displays. Bidder will be responsible for any additional power, auxiliary steel or attachments needed outside the drawing set.

As currently shown and specified, the intent is for local control and processing for the displays. Bidder shall also provide all necessary equipment and wiring to provide connectivity from the local area control and the main production control room router. This integrated system will allow for signal/video feeds to be sent from the four cameras to the main control room along with overall control of the video displays. The intended result shall allow for direct control of video feeds and displays from either location.

LED provider should submit a price for a complete package as specified in the drawings.

This Addendum consists of 49 pages.

Fire and Ice Club renderings (2 pages)  
Schematic and Plan drawings for Fire and Ice Club (25 pages)  
Revised RFP bid forms. (9 pages)  
LED procurement renderings (12 pages)

The link below will allow Download of the related Architectural, Structural, and Electrical documents for the LED video display procurement.

<https://hks.thruinc.net/Desktop/Distro/Open/051GMJHI9LI>

This addendum and all files can be found on the following FTP link:

<http://transfer.vanwagner.com/WebInterface/login.html?u=Vikings&p=BidForms>

USER NAME: Vikings PASSWORD: bidforms







**OWNER**  
MINNESOTA SPORTS FACILITIES AUTHORITY  
900 SOUTH 5th STREET, MINNEAPOLIS, MN 55415

**OWNER**  
MINNESOTA WINGS FOOTBALL, LLC  
5500 VIKING DR., EDEN PRAIRIE, MN 55344

**ARCHITECT / INTERIORS / BRANDING**  
HKS, INC.  
301 N. ST. PAUL, ST., SUITE 100, DALLAS, TX 75201

**ASSOCIATE ARCHITECT - SKIN**  
STUDIO FIVE ARCHITECTS  
322 FIRST AVE. N. SUITE 400, MINNEAPOLIS, MN 55401

**ASSOCIATE ARCHITECT - INTERIORS**  
STUDIO HVF  
901 NORTH 5th ST., SUITE 228, MINNEAPOLIS, MN 55401

**MEP / TECHNOLOGY / LIGHTING**  
M.E. ENGINEERS, INC.  
10555 WEST 43rd AVE., WHEAT RIDGE, CO 80033

**STRUCTURAL ENGINEER**  
THORNTON TOMASETTI  
12750 MERIT DR., SUITE 750, LB-7, DALLAS, TX 75251

**CIVIL ENGINEER**  
EVS, INC.  
10255 VALLEY VIEW, SUITE 123, EDEN PRAIRIE, MN 55344

**LANDSCAPE ARCHITECT**  
OSLUND AND ASSOCIATES  
115 WASHINGTON AVE. N., MINNEAPOLIS, MN 55401

**AUDIO VISUAL CONSULTANTS**  
idbr  
15508 WRIGHT BROTHERS DR., ADDISON, TX 75001

**WJHW**  
4011 SPRING VALLEY RD., DALLAS, TX 75244

**CODE / FIRE PROTECTION**  
FSC, INC.  
9225 INDIAN CREEK, SUITE 300, OVERLAND PARK, KS 66210

**FOOD SERVICE**  
RICCA NEWMARK  
5235 SOUTH VALENTIA, GREENWOOD VLG, CO 80111

**WAYFINDING**  
SELECT PERKINS DESIGN  
432 CULVER BLVD., PLAYA DEL REY, CA 90293

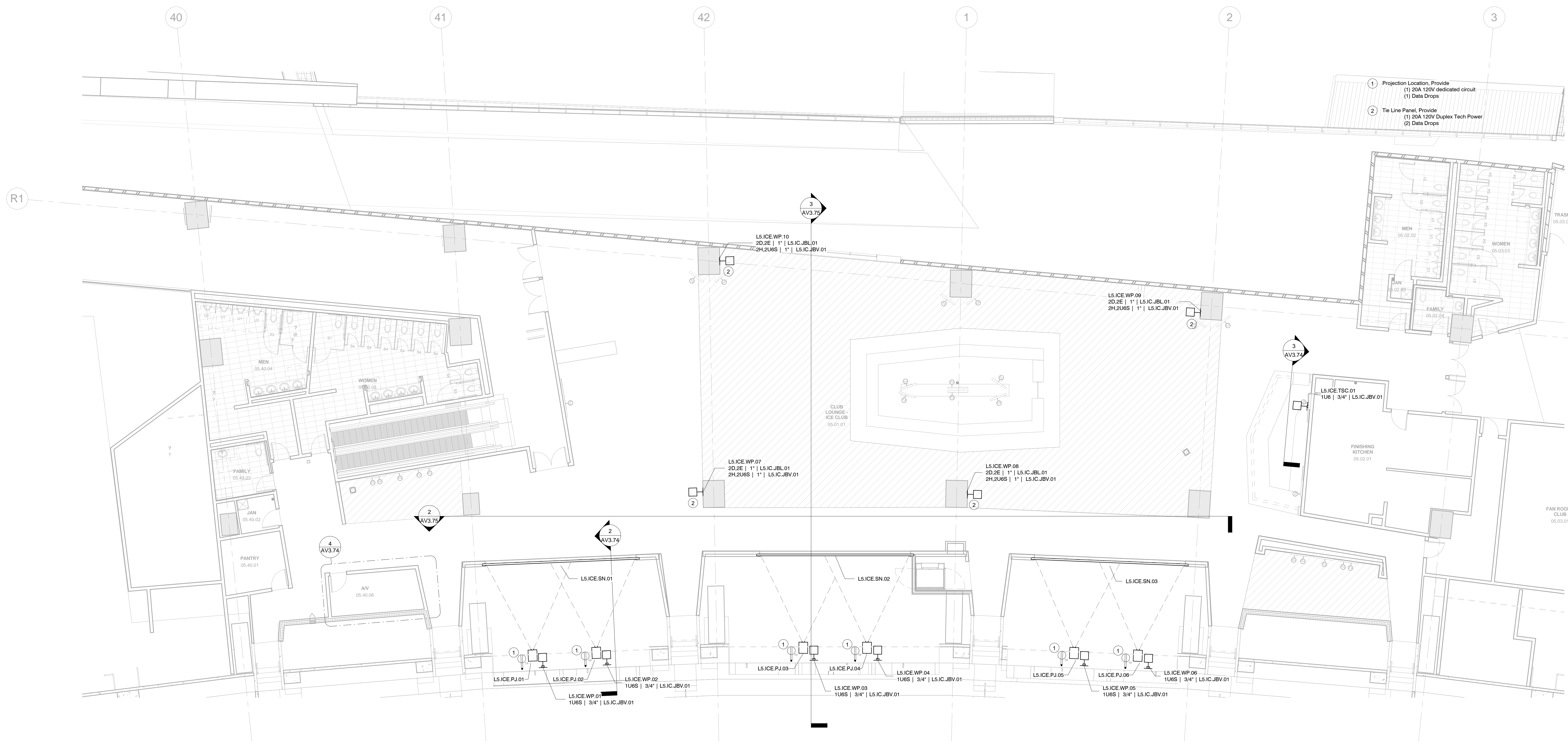
**VERTICAL TRANSPORTATION**  
ELEVATOR ADVISORY GROUP  
14530 PENNOCK AVE., SAINT PAUL, MN 55124

**ADA CONSULTANT**  
ED ROTHER CONSULTING, LLC  
2990 MISSION BELLEVUE, LOUISBURG, KS 66663

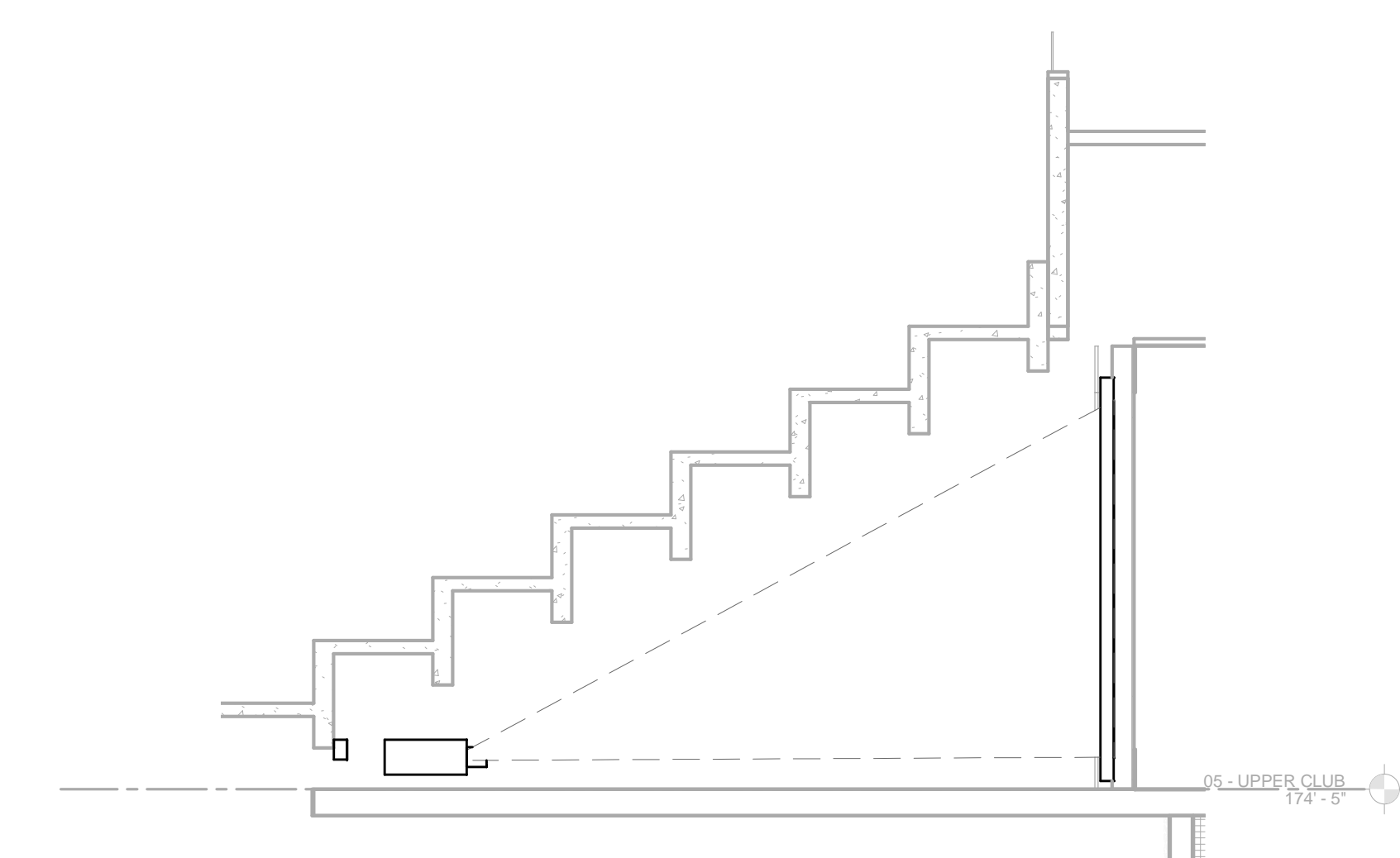
**WIND / SNOW CONSULTANT**  
ROWAN WILLIAMS, DAVIES, AND IRWIN, INC.  
650 WOODLAWN RD. W., QUELPH, ON CANADA N1K 1B8

**BUILDING ENVELOPE CONSULTANT**  
THORNTON TOMASETTI - BUILDING SKIN PRACTICE  
300 N. WABASH AVE., SUITE 1500, CHICAGO, IL 60611

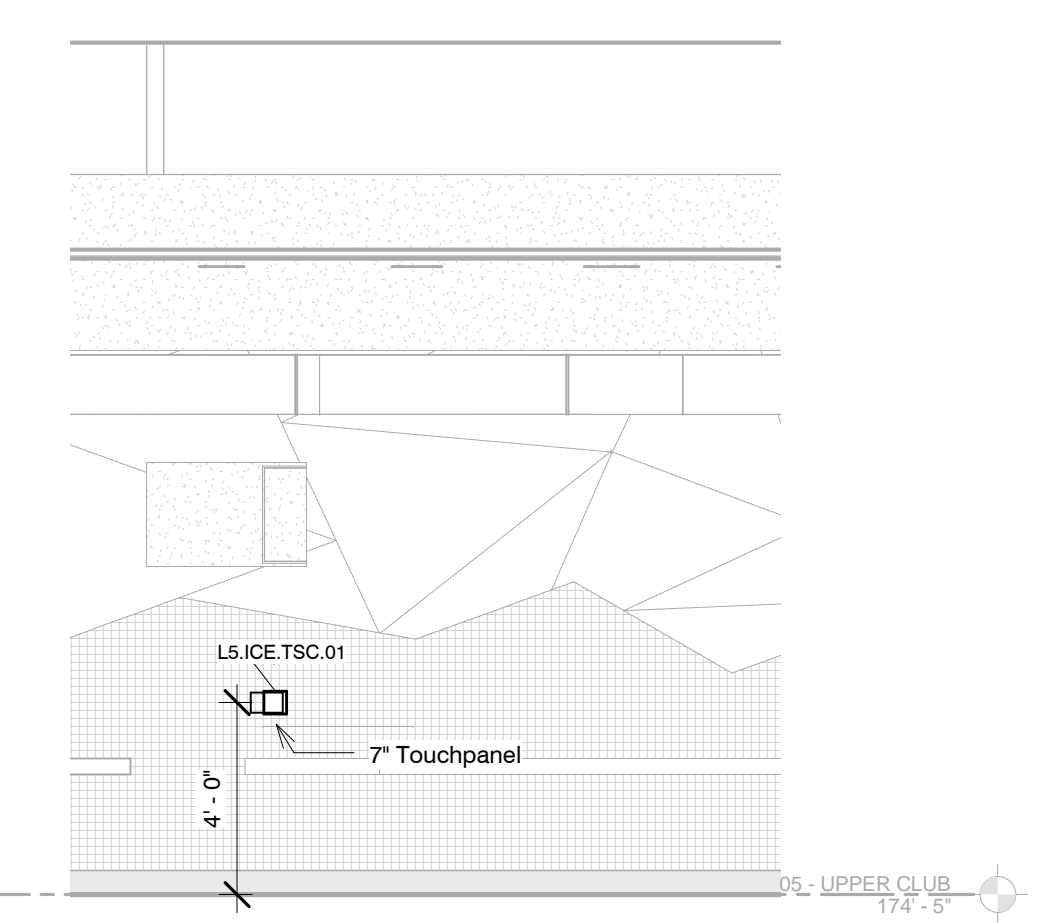
**FAÇADE ACCESS CONSULTANT**  
LEITCH BATES, INC.  
8089 LINCOLN ST., SUITE 105, LITTLETON, CO 80122



**1 05 - Ice Club (Upper Club North)**  
1/8" = 1'-0"

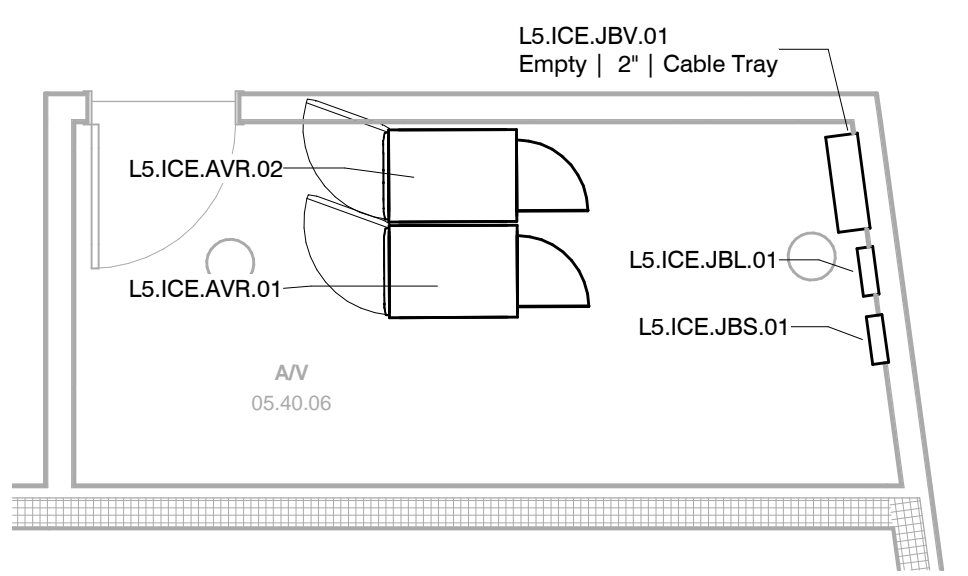


**2 05 - Ice Club Screen Section**  
1/4" = 1'-0"

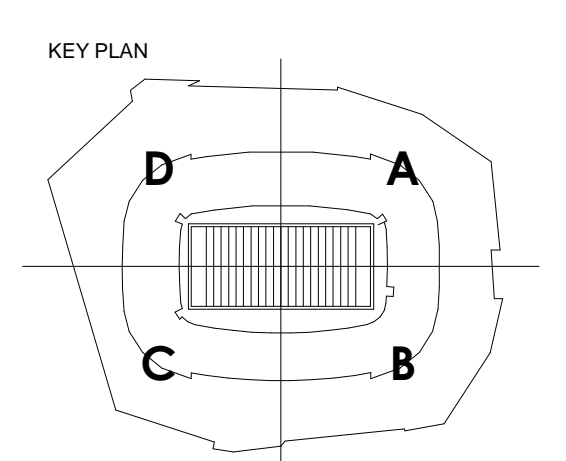


**3 05 - Ice Club Touchpanel Section**  
1/4" = 1'-0"

This AV room services Level 5 Rooms in Sector 9-12 & L5 Signage VideoWall 01. 21,000 BTU/hr cooling required in this room during full operation. 44 Network ports with access to multiple VLANs required in L5.ICE.AVR.01 by others. Div 26 to provide power in J-Boxes at top of racks for connection to circuit strip by 27-41 34. (6) 20A Circuits



**4 05 - Ice Club AV Equipment Room**  
1/4" = 1'-0"



REVISION NO.	DESCRIPTION	DATE
1	CCD 093	07.02.2014
2	CCD 150	12.19.2014

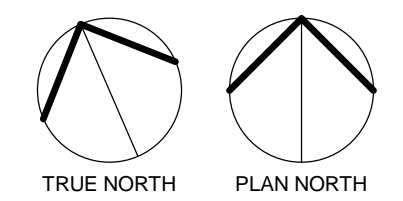
HKS PROJECT NUMBER  
**16246.000**

DATE  
**MAY 2, 2014**

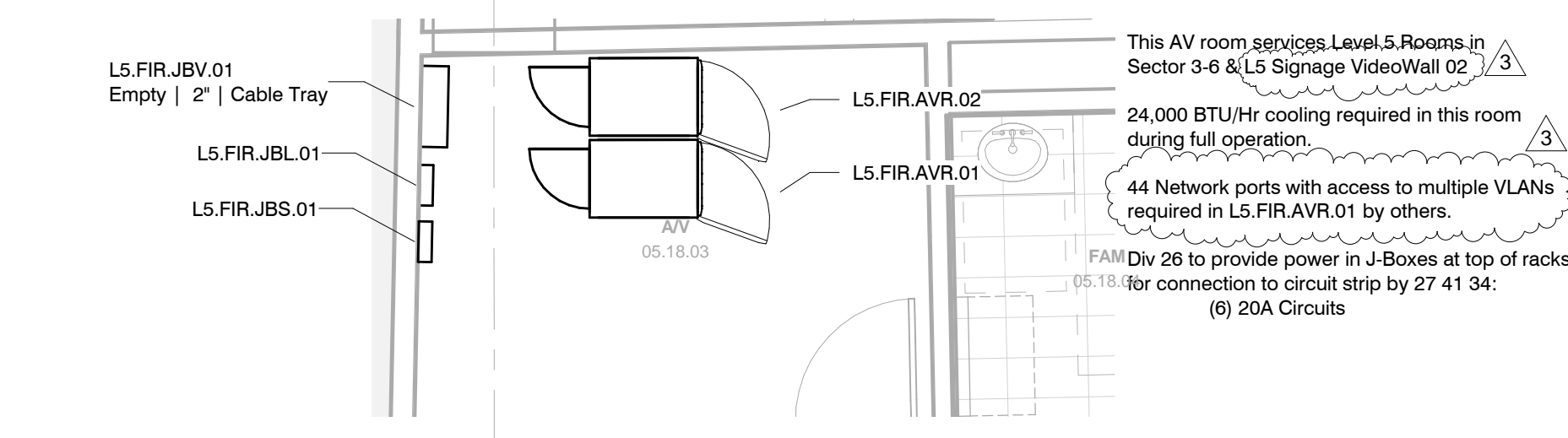
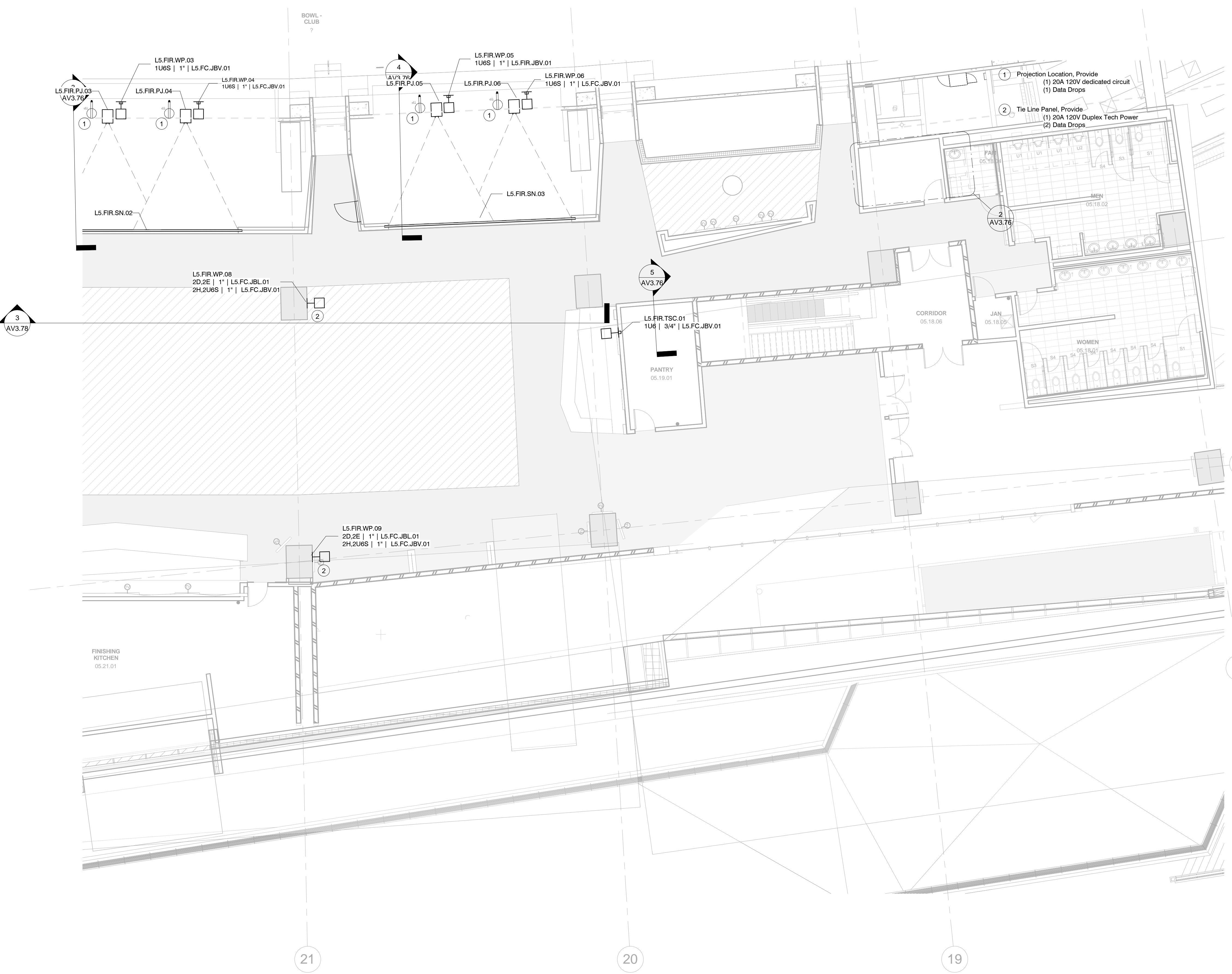
ISSUE  
**CCD-060**

SHEET TITLE  
**Ice Club AV Plan Detail**

SHEET NO.

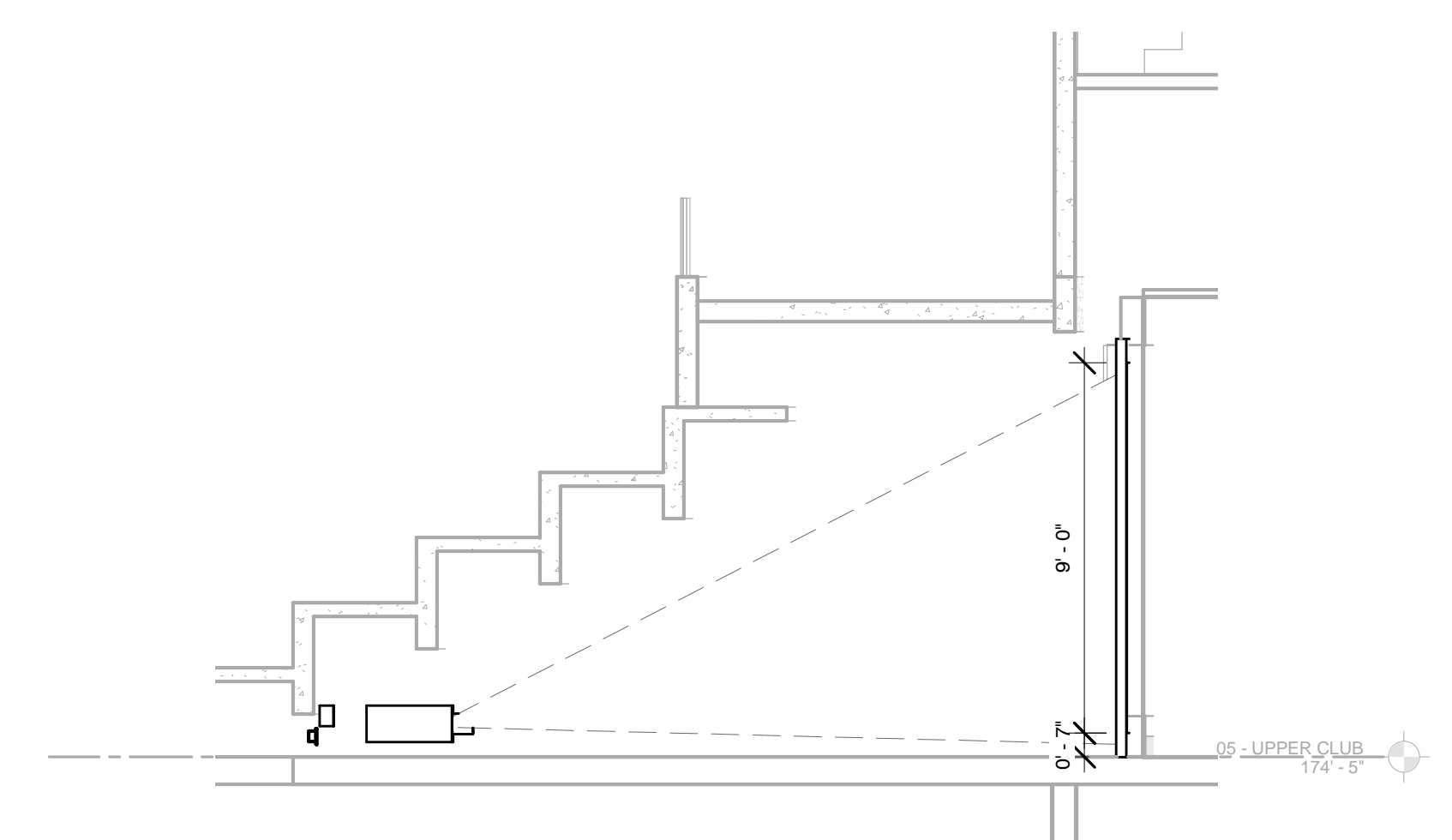




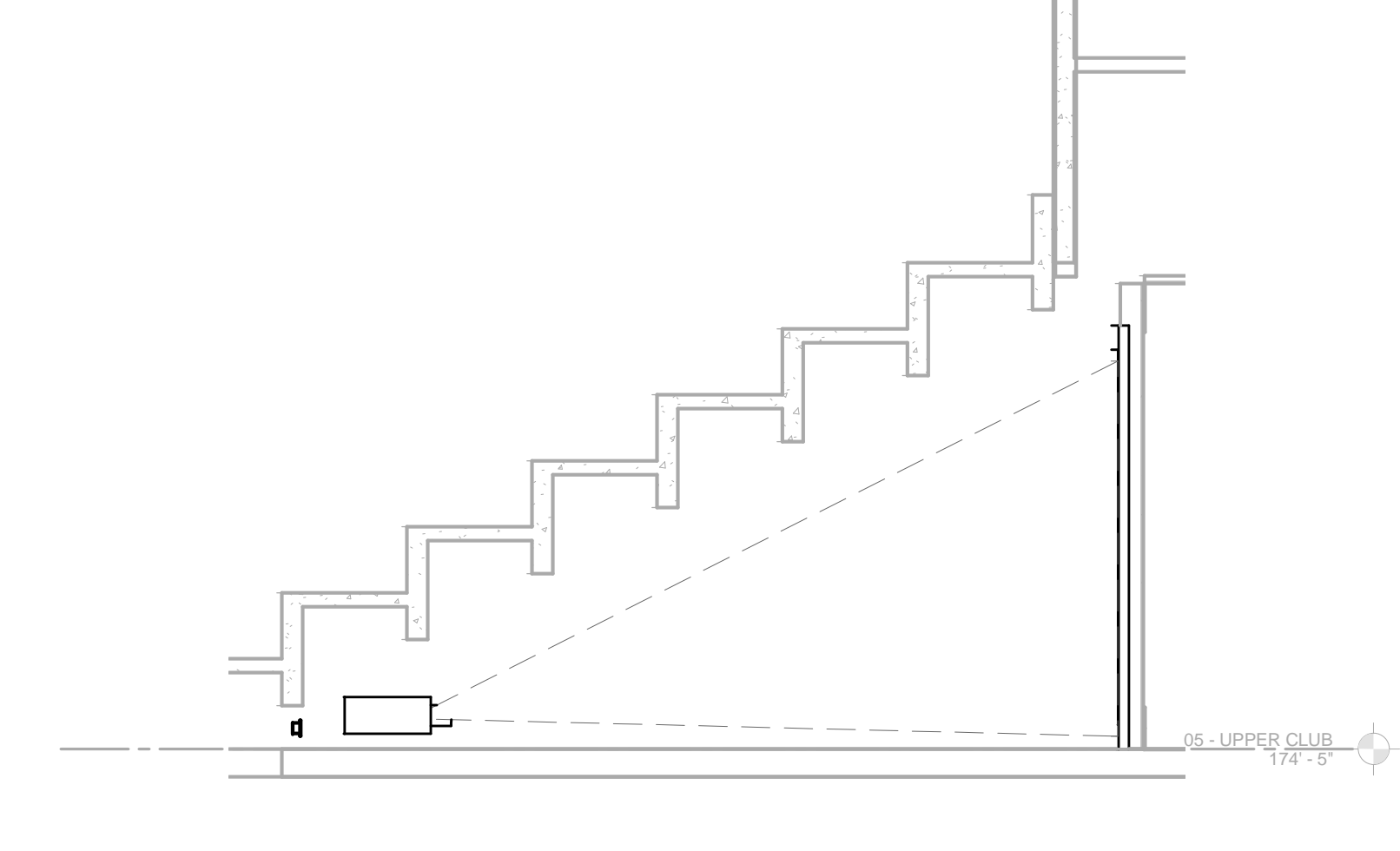


**2 05 - Fire Club AV Equipment Room**  
1/4" = 1'-0"

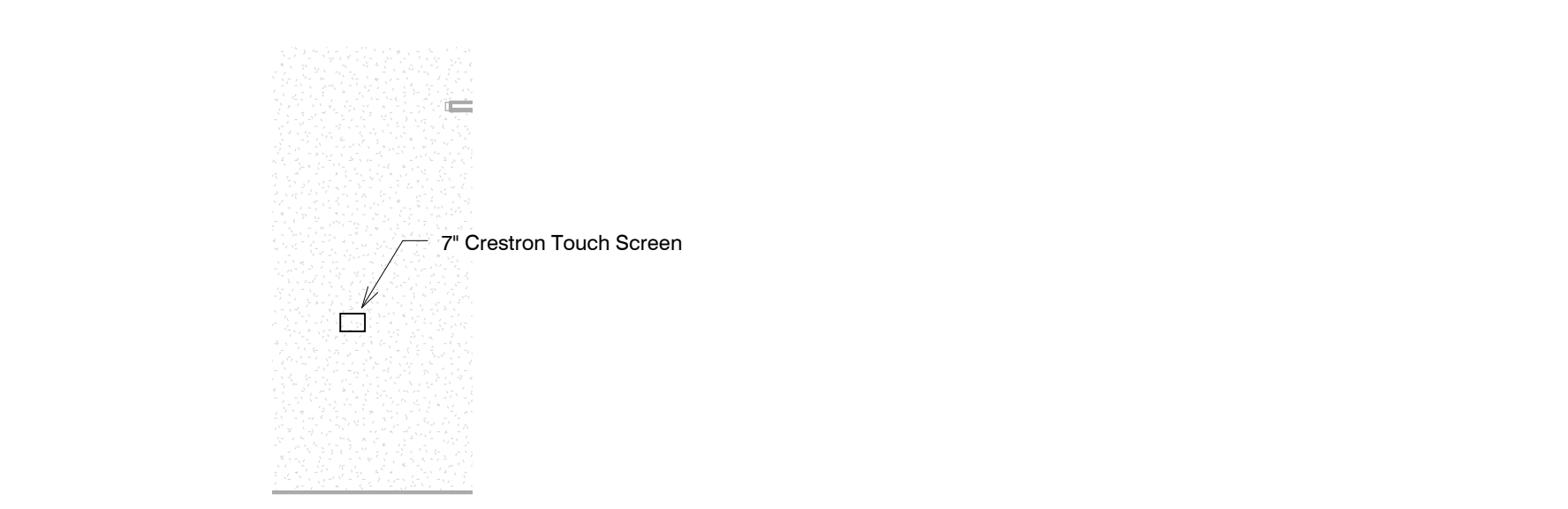
**1 05 - Fire Club East (Upper Club South)**  
1/8" = 1'-0"



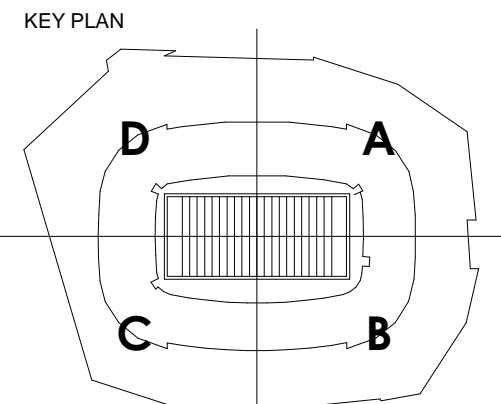
**3 05 - Fire Club Center Screen Section**  
1/4" = 1'-0"



**4 05 - Fire Club Right Screen Section**  
1/4" = 1'-0"



**5 05 - Fire Club Touchpanel Section**  
1/4" = 1'-0"



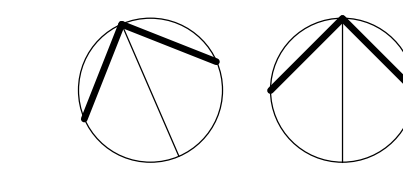
REVISION NO.	DESCRIPTION	DATE
1	CCD 093	07.02.2014
2	CCD 105	07.25.2014
3	CCD 150	12.19.2014

HKS PROJECT NUMBER  
**16246.000**  
DATE  
**MAY 2, 2014**  
ISSUE  
**CCD-060**

SHEET TITLE  
**Fire Club East AV Plan Detail**

SHEET NO.

**AV3.76**







**OWNER**  
MINNESOTA SPORTS FACILITIES AUTHORITY  
900 SOUTH 5th STREET, MINNEAPOLIS, MN 55415

**OWNER**  
MINNESOTA WINGS FOOTBALL, LLC  
5500 VIKING DR., EDEN PRAIRIE, MN 55344

**ARCHITECT / INTERIORS / BRANDING**  
HKS, INC.  
3501 N. ST. PAUL ST., SUITE 100, DALLAS, TX 75201

**ASSOCIATE ARCHITECT - SKIN**  
STUDIO FIVE ARCHITECTS  
322 FIRST AVE. N. SUITE 400, MINNEAPOLIS, MN 55401

**ASSOCIATE ARCHITECT - INTERIORS**  
STUDIO HIVE  
901 NORTH 5th ST., SUITE 228, MINNEAPOLIS, MN 55401

**MEP / TECHNOLOGY / LIGHTING**  
M.E. ENGINEERS, INC.  
10555 WEST 43rd AVE., WHEAT RIDGE, CO 80033

**STRUCTURAL ENGINEER**  
THORNTON TOMASETTI  
12750 MERIT DR., SUITE 750, LB-7, DALLAS, TX 75251

**CIVIL ENGINEER**  
EVS, INC.  
10255 VALLEY VIEW, SUITE 123, EDEN PRAIRIE, MN 55344

**LANDSCAPE ARCHITECT**  
OSLUND AND ASSOCIATES  
115 WASHINGTON AVE. N., MINNEAPOLIS, MN 55401

**AUDIO VISUAL CONSULTANTS**  
EVS, INC.  
15508 WRIGHT BROTHERS DR., ADDISON, TX 75001

**CODE / FIRE PROTECTION**  
FSC, INC.  
6225 INDIAN CREEK, SUITE 300, OVERLAND PARK, KS 66210

**FOOD SERVICE**  
RICCA NEWMARK  
5235 SOUTH VALENTIA, GREENWOOD VLG, CO 80111

**WAYFINDING**  
SELECT PERKINS DESIGN  
432 CULVER BLVD., PLAYA DEL REY, CA 90293

**VERTICAL TRANSPORTATION**  
ELEVATOR ADVISORY GROUP  
14530 PENNINGTON AVE., SAINT PAUL, MN 55124

**ADA CONSULTANT**  
ED ROTHER CONSULTING, LLC  
22905 MISSOURI BELLEVUE, LOUISBURG, KS 66603

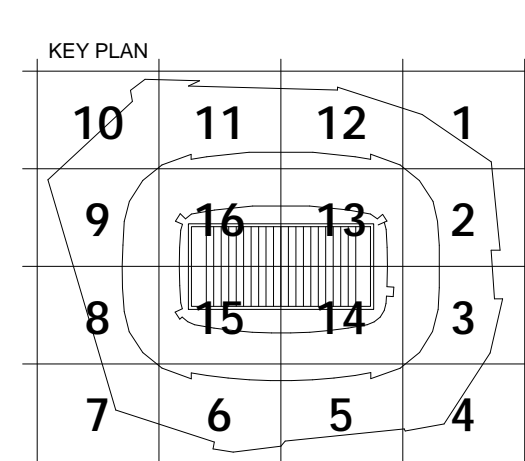
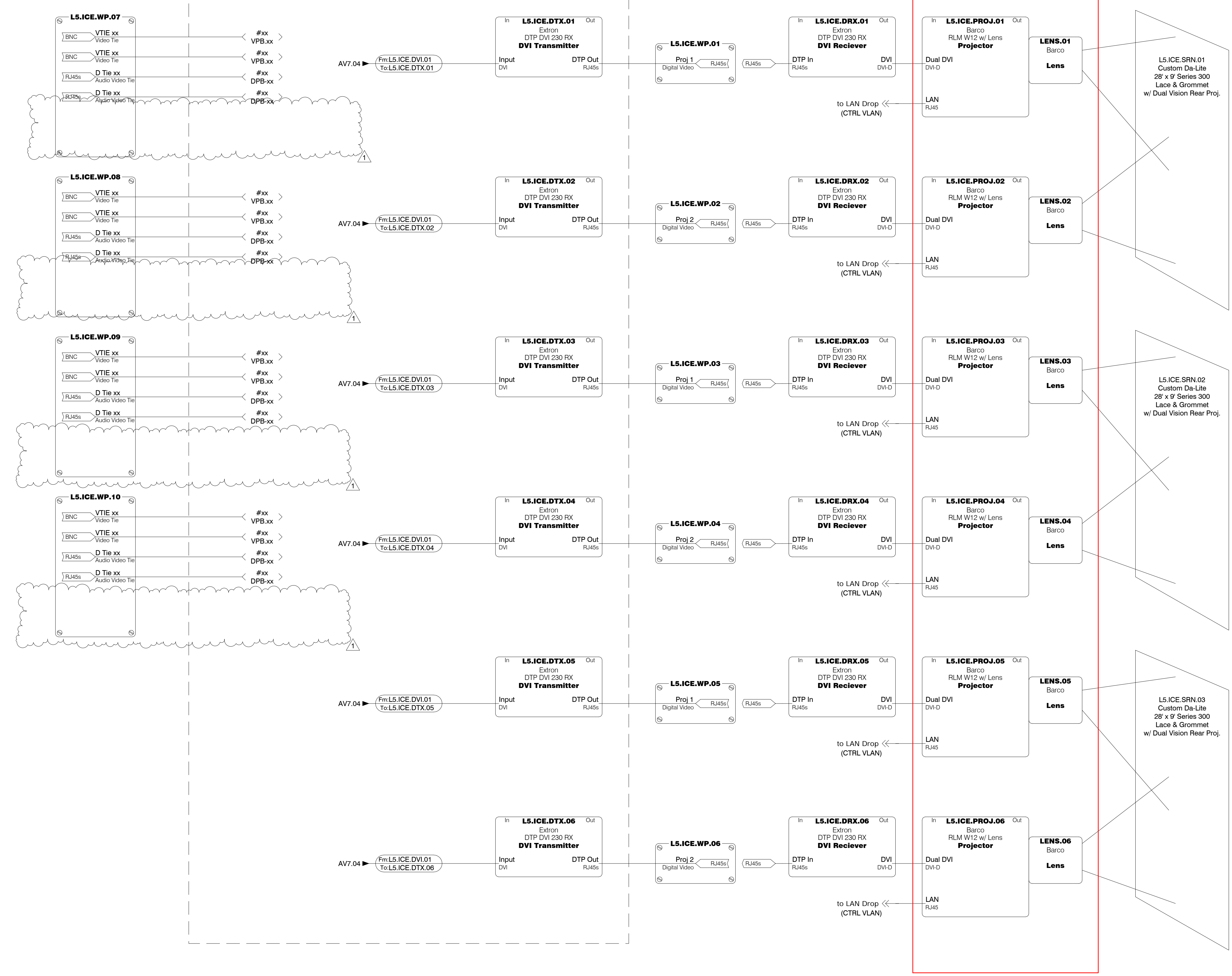
**WIND / SNOW CONSULTANT**  
ROWAN, WILLIAMS, DAVIES, AND IRWIN, INC.  
650 WOODLAWN RD. W., GUELPH, ON CANADA N1K 1B8

**BUILDING ENVELOPE CONSULTANT**  
THORNTON TOMASETTI - BUILDING SKIN PRACTICE  
300 N. WABASH AVE., SUITE 1500, CHICAGO, IL 60611

**FAÇADE ACCESS CONSULTANT**  
SERCH BATES, INC.  
8089 LINCOLN ST., SUITE 105, LITTLETON, CO 80122



## AV Equipment Room



REVISION NO.	DESCRIPTION	DATE
1	CCD 093	07.02.2014

HKS PROJECT NUMBER  
16246.000

DATE  
MAY 2, 2014

ISSUE  
CCD-060

SHEET TITLE  
AV Schematics Ice Club Video

SHEET NO.

AV7.12

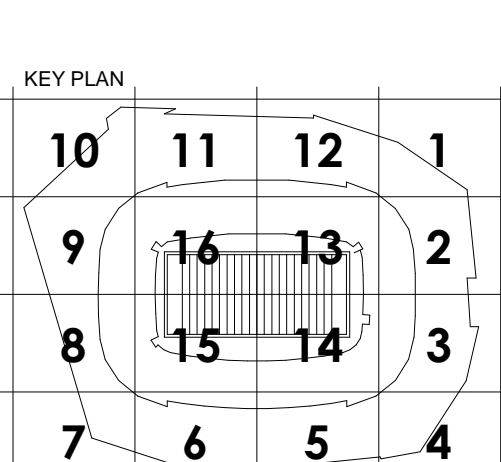
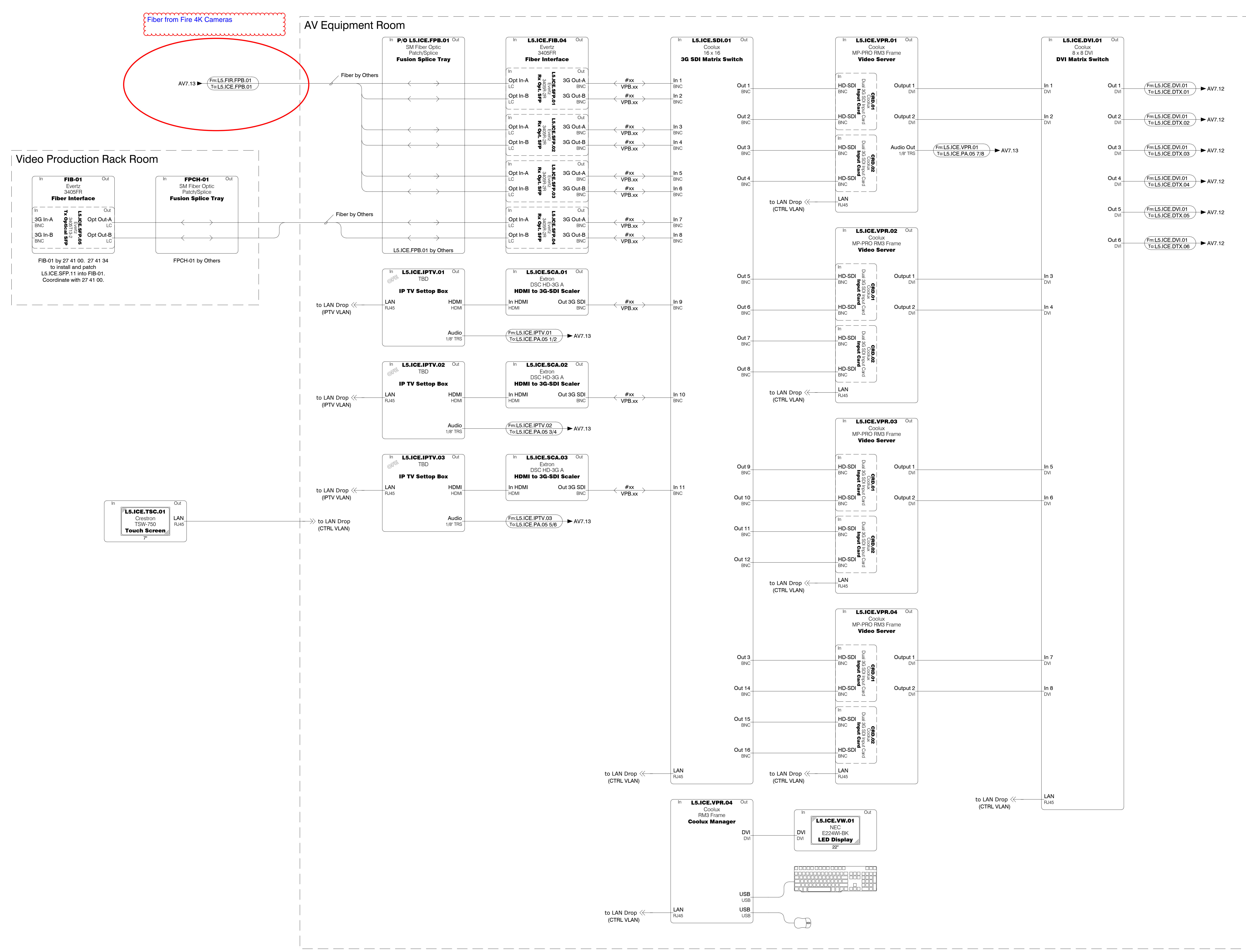












REVISION NO.	DESCRIPTION	DATE

HKS PROJECT NUMBER  
**16246.000**

DATE  
**MAY 2, 2014**

ISSUE  
**CCD-060**

SHEET TITLE  
**AV Schematics Ice Club Video**

SHEET NO.



MINNESOTA MULTI-PURPOSE STADIUM  
MINNEAPOLIS, MINNESOTA

Quantity	Manufacturer	Model Number	Description
<b>Field Sideline Club</b>			
13	JBL	CBT 70J	70 cm J-Shaped Coaxial Line Array with 16 x 1" and 4 x 5" Driver
5	JBL	CONTROL 26CT	Control 26C with Transformer. Coordinate color with Architect
4	JBL	CONTROL 25	2-Way Indoor/Outdoor Loudspeaker, Coordinate color with Architect
2	Danley Sound Labs	TH212I	Subwoofer; Dual 12". Coordinate color with Architect.
2	Crown	DCi 8 600N	Amplifier: 8 Channels at 600W with Blu-Link
1	BSS	BLU-806	DSP with Dante & Blu-Link
3	BSS	BLUCARD-IN	4 Chanel Analog Input Card
1	BSS	BLUCARD-OUT	4 Chanel Analog Output Card
1	D&M Professional	DN-700H	Network Audio / USB Player and AM/FM Tuner
2	Shure	ULXD4Q	Quad Digital Wireless Receiver
2	Shure	ULXD1	Digital Wireless Bodypack Transmitter with Miniature 4-Pin Connector
2	Shure	ULXD2/B87A	Handheld Transmitter with BETA 87A Microphone
1	Listen Technologies	LT-800-216-01	Stationary RF Transmitter (216 MHz) (North America)
1	Listen Technologies	LA-124	90deg Helical Antenna (216 MHz)
1	Listen Technologies	LA-326	Universal Rack Mounting Kit
0	DiGiCo	X-SD11i-2P	DiGiCo SD11i Control Surface with MADI; D-Rack w/ Dual PSU
0	Sound Construction and Supply	R8-1-ST-16D-MP-V	8-Space, Single Bay, 16" Deep, Maple Trim, Veneered Rack
0	Sound Construction and Supply	AD-R14+13-V	AD Custom 13 Space over 14 Space Mixer Cart
1	Christie Digital	DHD800	DHD800 1-DLP, Dual Lamp, HD 1920x1080 8000lm
1	Christie Digital	For DHD700, DHD800, DS+750 103-120104-02	Lens PROJ 1.8-2.8:1 Standard
1	Da-Lite	36861	Large Advantage Deluxe Electrol - HDTV Format; 133" X 236"; Matt
1	Da-Lite	40973	Single Motor Low Voltage Control with wall switch
1	Crestron	CP3	3-Series control processor
2	Crestron	TSW-750	7" LCD touchscreen wall mount
4	Middle Atlantic Products	BGR-4532	45 Space , 32" Deep Rack with Rear Door
1	Middle Atlantic Products	BSPN-45-32	Pair of Side Panels for BGR-4532
4	Middle Atlantic Products	VFD-45A	Curved Vented Front Door for 45 Space BGR Racks
1	Oppo	BDP-103	Blu-Ray player with RS-232
0	Samsung	UD55A	55" Ultra Narrow Bezel LED LCD Display w/ built in video wall processing and LAN control.
0	Chief	LSMVU	Fusion Pull-Out, Large
1	Crestron	DM-MD16X16	16x16 Digital Media Switcher frame
2	Crestron	DMC-HD	HDMI Input Card for DM Switchers
2	Crestron	DMC-C	DigitalMedia 8G+ Input Card for DM Switchers
2	Crestron	DM-TX-200-C-2G	DigitalMedia 8G+ Transmitter 200
2	Crestron	PWE-4803RU	PoE Injector
0	Crestron	DMCO-5555	8 DM 8G+ w/4 HDMI Output Card for DM-MD16X16

MINNESOTA MULTI-PURPOSE STADIUM  
MINNEAPOLIS, MINNESOTA

1 Crestron	DMCO-5533	4 DM 8G+ w/2 HDMI & 4 HDMI w/4 Stereo Analog Audio Output Card for DM-MD16X16
1 Crestron	DM-RMC-Scale-C	DigitalMedia 8G+ Reciever and Room Controller with Scaled output
<b>Valhalla Club</b>		
10 Fulcrum Acoustic	CX896	8 inch Coaxial Loudspeaker, 90x60. Coordinate color with Architect
16 JBL	CONTROL 226C/T	6.5" Coax Ceiling Loudspeaker with Transformer. Coordinate color with Architect
8 JBL	Control 67P/T	Pendant Speaker with Transformer. Coordinate color with Architect
12 Danley Sound Labs	TH112	Subwoofer: Single 12". Coordinate color with Architect.
11 JBL	CONTROL 26CT	Control 26C with Transformer. Coordinate color with Architect
2 Crown	DCi 8 300N	Amplifier: 8 Channels at 300W with Blu-Link
3 Crown	DCi 4 1250N	Amplifier: 4 Channels at 1250W with Blu-Link
1 BSS	BLU-806	DSP with Dante & Blu-Link
3 BSS	BLUCARD-IN	4 Chanel Analog Input Card
1 BSS	BLUCARD-OUT	4 Chanel Analog Output Card
1 BSS	BLU-BIB	8 Channel DSP Input Box
1 D&M Professional	DN-700H	Network Audio / USB Player and AM/FM Tuner
1 Shure	ULXD4Q	Quad Digital Wireless Receiver
2 Shure	ULXD1	Digital Wireless Bodypack Transmitter with Miniature 4-Pin Connector
2 Shure	ULXD24/B87A	Single Handheld System. Includes ULXD2 Handheld BETA 87A Microphone
1 Listen Technologies	LT-800-216-01	Stationary RF Transmitter (216 MHz) (North America)
1 Listen Technologies	LA-124	90deg Helical Antenna (216 MHz)
1 Listen Technologies	LA-326	Universal Rack Mounting Kit
1 Crestron	CP3	3-Series control processor
2 Crestron	TSW-750	7" LCD touchscreen wall mount
1 Middle Atlantic Products	BGR-4532	45 Space , 32" Deep Rack with Rear Door
1 Middle Atlantic Products	BSPN-45-32	Pair of Side Panels for BGR-4532
1 Middle Atlantic Products	VFD-45A	Curved Vented Front Door for 45 Space BGR Racks
1 Oppo	BDP-103	Blu-Ray player with RS-232
16 Owner Furnished	55" Ultra-Narrow Bezel Display	55" Ultra Narrow Bezel LED LCD Display, 5.5mm Bezel, 1080p, w/ Display Port
16 Owner Furnished	Chief LSMVU	Fusion Pull-Out, Large
0 Crestron	DM-MD16X16	16x16 Digital Media Switcher frame
0 Crestron	DMC-HD	HDMI Input Card for DM Switchers
0 Crestron	DMC-C	DigitalMedia 8G+ Input Card for DM Switchers
0 Crestron	DM-TX-200-C-2G	DigitalMedia 8G+ Transmitter 200
0 Crestron	PWE-4803RU	PoE Injector
0 Crestron	DMCO-5555	8 DM 8G+ w/4 HDMI Output Card for DM-MD16X16
0 Crestron	DM-RMC-Scale-C	DigitalMedia 8G+ Reciever and Room Controller with Scaled output and video wall processing
2 Extron	XTP T UWP 202 Black	Long Distance Two Input XTP Transmitter - Black Decora(r) Wallplate
2 Extron	XTP SR HDMI	Long Distance XTP Scaling Receiver

MINNESOTA MULTI-PURPOSE STADIUM  
MINNEAPOLIS, MINNESOTA

2	Extron	XTP PI 100	Power Injector for XTP and Pro Series Control Systems, Supplies power to one XTP extender, IPL Pro control processor, or TouchLink Pro touchpanel,
1	Planar	Custom VCS Gen 4	Custom Dual VCS Gen4 Chassis, (16) DisplayPort Outputs, (13) 1080p HDMI/DVI inputs, and (16) 1080p DisplayPort Inputs
3	Mac Pro	6-Core and Dual GPU	Desktop Apple computer, 6-Core 3.5 GHz, 16GB RAM, Dual AMD D500, up to three 4k displays or six thunderbolt displays, 256 GB flash storage
3	Sedna Presentor	Presenter Player Pro	resenter Player is the playout application that displays your digital signage projects. The Player displays content according to schedules defined in Presenter Creator, which are then committed to the Player through, for example, LAN networks or from designated web spaces.
1	Extron	SW 12A	Stereo Audio Switcher
16	Extron	DTP R DP 330	Long Distance DisplayPort Twisted Pair Extender, Reciever, 330' over shielded CATx cable
16	Extron	DTP T DP 330	Long Distance DisplayPort Twisted Pair Extender, Transmitter, 330' over shielded CATx cable

**Vikings Club**

44	JBL	CONTROL 226C/T	6.5" Coax Ceiling Loudspeaker with Transformer. Coordinate color with Architect
12	JBL	CONTROL 312CS	12" In-Ceiling Subwoofer.
12	JBL	MTC-300SG12	Square Grille for 12" Models. Coordinate color with Architect.
12	JBL	MTC-300BB12	Back Box for 12" Speaker Models
12	JBL	CONTROL 26CT	Control 26C with Transformer. Coordinate color with Architect
21	Innovox	SL-2.1 R wht	2-Way Loudspeaker
21	Innovox	SLA trans 70/30	30 W Transformer
1	Crown	DCi 8 300N	Amplifier: 8 Channels at 300W with Blu-Link
1	Crown	DCi 8 600N	Amplifier: 8 Channels at 600W with Blu-Link
1	BSS	BLU-806	DSP with Dante & Blu-Link
3	BSS	BLUCARD-IN	4 Chanel Analog Input Card
1	BSS	BLUCARD-OUT	4 Chanel Analog Output Card
1	D&M Professional	DN-700H	Network Audio / USB Player and AM/FM Tuner
0	Middle Atlantic	SR-40-32	40 Space Swinging Wall Rack
0	Middle Atlantic Products	LVFD-40	Vented Front Door for 40 Space ERK, MRK, WRK AND SR Racks
2	Middle Atlantic Products	BGR-4532	45 Space , 32" Deep Rack with Rear Door
1	Middle Atlantic Products	BSPN-45-32	Pair of Side Panels for BGR-4532
2	Middle Atlantic Products	VFD-45A	Curved Vented Front Door for 45 Space BGR Racks
2	Shure	ULXD4Q	Quad Digital Wireless Receiver
2	Shure	ULXD1	Digital Wireless Bodypack Transmitter with Miniature 4-Pin Connector
2	Shure	ULXD2/B87A	Handheld Transmitter with BETA 87A Microphone
1	Listen Technologies	LT-800-216-01	Stationary RF Transmitter (216 MHz) (North America)
1	Listen Technologies	LA-124	90deg Helical Antenna (216 MHz)
1	Listen Technologies	LA-326	Universal Rack Mounting Kit

IDIBRI 2013125

ANCILLARY AV SYSTEMS

2014-12-19 CCD150

274134-A3



MINNESOTA MULTI-PURPOSE STADIUM  
MINNEAPOLIS, MINNESOTA

0	DiGiCo	X-SD11i-2P	DiGiCo SD11i Control Surface with MADI; D-Rack w/ Dual PSU
0	Sound Construction and Supply	R8-1-ST-16D-MP-V	8-Space, Single Bay, 16" Deep, Maple Trim, Veneered Rack
0	Sound Construction and Supply	AD-R14+13-V	AD Custom 13 Space over 14 Space Mixer Cart
1	Barco	PHWU-81B	7500 lumen, single chip DLP, WUXGA Projector
1	Barco	R9832767	H lens (1.3-1.8:1)
0	Da-Lite	88538	Tensioned Contour Electrol - HDTV Format; 65" X 116"; Da-Mat
1	Da-Lite	88300	Tensioned Advantage(r) Deluxe Electrol - HDTV Format; 65" X 116"; Da-Mat
1	Crestron	CP3	3-Series control processor
2	Crestron	TSW-750	7" LCD touchscreen wall mount
1	Oppo	BDP-103	Blu-Ray player with RS-232
9	Owner Furnished	55" Ultra-Narrow Bezel Display	55" Ultra Narrow Bezel LED LCD Display, 5.5mm Bezel, 1080p, w/ Display Port
9	Owner Furnished	Chief LSMVU	Fusion Pull-Out, Large
9	Misc	Budget	LCD Monitor Mounting
0	Crestron	DM-MD16X16	16x16 Digital Media Switcher frame
0	Crestron	DMC-HD	HDMI Input Card for DM Switchers
0	Crestron	DMC-C	DigitalMedia 8G+ Input Card for DM Switchers
0	Crestron	DM-TX-200-C-2G	DigitalMedia 8G+ Transmitter 200
0	Crestron	DMCO-5555	8 DM 8G+ w/4 HDMI Output Card for DM-MD16X16
0	Crestron	DMCO-5300	2 DM 8G+ w/1 HDMI & 2 HDMI w/2 Stereo Analog Audio Output Card for DM-MD16X16
0	Crestron	DM-RMC-Scale-C	DigitalMedia 8G+ Reciever and Room Controller with Scaled output and video wall processing
2	Extron	XTP T UWP 202 Black	Long Distance Two Input XTP Transmitter - Black Decora(r) Wallplate
2	Extron	XTP SR HDMI	Long Distance XTP Scaling Receiver
2	Extron	XTP PI 100	Power Injector for XTP and Pro Series Control Systems, Supplies power to one XTP extender, IPL Pro control processor, or TouchLink Pro touchpanel,
1	Planar	Custom VCS Gen 4	Custom Dual VCS Gen4 Chassis, (10) DisplayPort Outputs, (9) 1080p HDMI/DVI inputs, and (9) 1080p DisplayPort Inputs
2	Mac Pro	6-Core and Dual GPU	Desktop Apple computer, 6-Core 3.5 GHz, 16GB RAM, Dual AMD D500, up to three 4k displays or six thunderbolt displays, 256 GB flash storage
2	Sedna Presentor	Presenter Player Pro	resenter Player is the playout application that displays your digital signage projects. The Player displays content according to schedules defined in Presenter Creator, which are then committed to the Player through, for example, LAN networks or from designated web spaces.
1	Extron	SW 12A	Stereo Audio Switcher
9	Extron	DTP R DP 330	Long Distance DisplayPort Twisted Pair Extender, Reciever, 330' over shielded CATx cable
9	Extron	DTP T DP 330	Long Distance DisplayPort Twisted Pair Extender, Transmitter, 330' over shielded CATx cable

**Fire Club**

IDIBRI 2013125

ANCILLARY AV SYSTEMS

2014-12-19 CCD150

274134-A4

MINNESOTA MULTI-PURPOSE STADIUM  
MINNEAPOLIS, MINNESOTA

7 Fulcrum Acoustic	Model M	Dual 12 inch Coaxial Loudspeaker, 75x75. Coordinate color with Architect
7 Fulcrum Acoustic	Model S	Dual 8 inch Coaxial Loudspeaker, 100x100. Coordinate color with Architect
6 JBL	CONTROL 25AV	2-Way Indoor/Outdoor Loudspeaker with Transformer, Coordinate color with Architect
9 JBL	CONTROL 26CT	Control 26C with Transformer. Coordinate color with Architect
4 JBL	CONTROL 226C/T	6.5" Coax Ceiling Loudspeaker with Transformer. Coordinate color with Architect
2 Crown	DCi 8 600N	Amplifier: 8 Channels at 600W with Blu-Link
1 Crown	DCi 8 300N	Amplifier: 8 Channels at 300W with Blu-Link
1 Crown	DCi 4 1250N	Amplifier: 4 Channels at 1250W with Blu-Link
1 Crown	DCi 2 1250N	Amplifier: 2 Channels at 1250W with Blu-Link
1 BSS	BLU-806	DSP with Dante & Blu-Link
3 BSS	BLUCARD-IN	4 Chanel Analog Input Card
1 BSS	BLUCARD-OUT	4 Chanel Analog Output Card
1 D&M Professional	DN-700H	Network Audio / USB Player and AM/FM Tuner
2 Middle Atlantic Products	BGR-4532	45 Space , 32" Deep Rack with Rear Door
1 Middle Atlantic Products	BSPN-45-32	Pair of Side Panels for BGR-4532
2 Middle Atlantic Products	VFD-45A	Curved Vented Front Door for 45 Space BGR Racks
2 Shure	ULXD4Q	Quad Digital Wireless Receiver
2 Shure	ULXD1	Digital Wireless Bodypack Transmitter with Miniature 4-Pin Connector
2 Shure	ULXD2/B87A	Handheld Transmitter with BETA 87A Microphone
1 Listen Technologies	LT-800-216-01	Stationary RF Transmitter (216 MHz) (North America)
1 Listen Technologies	LA-124	90deg Helical Antenna (216 MHz)
1 Listen Technologies	LA-326	Universal Rack Mounting Kit
0 DiGiCo	X-SD11i-2P	DiGiCo SD11i Control Surface with MADI; D-Rack w/ Dual PSU
0 Sound Construction and Supply	R8-1-ST-16D-MP-V	8-Space, Single Bay, 16" Deep, Maple Trim, Veneered Rack
0 Sound Construction and Supply	AD-R14+13-V	AD Custom 13 Space over 14 Space Mixer Cart
1 Crestron	CP3	3-Series control processor
1 Crestron	TSW-750	7" LCD touchscreen wall mount
1 Panduit	DP485E88TGY	Punchdown Patch Panel, Cat 5e, Flat, 48 Port, 2RU
6 Barco	RLM W12 w/ Lens	12k ANSI Lumen WUXGA projector with lens
1 Coolux	Custom Quote # 14-2370	(4) MP-Pro RM3 Frame with (4) 3G-SDI input each and Management Server
1 Coolux	Custom Quote # 14-2371	On-Site Commissioning from Coolux Engineering
1 Extron	DTP HDMI 230 D Tx	HDMI Twisted Pair Extender - Decora Wallplate
1 Extron	DTP HDMI 230 Rx	HDMI Twisted Pair Extender Receiver
1 Extron	HAE 100	HDMI Audio De-Embedder
4 Extron	DSC HD-3G A	HDMI to HD-SDI converter with scaling
1 Evertz	3405FRM-BNC	Fiber Optic SFP BNC mini-frame, single power supply, no SFP included
1 Evertz	3405T13-2	Dual TX Evertz SFP
1 Evertz	3405R-2	Dual RX Evertz SFP

IDIBRI 2013125

ANCILLARY AV SYSTEMS  
2014-12-19 CCD150

274134-A5

MINNESOTA MULTI-PURPOSE STADIUM  
MINNEAPOLIS, MINNESOTA

6 Extron	DTP DVI 230 RX	Single link DVI-D plus control and analog audio receiver
6 Extron	DTP DVI 230 TX	Single link DVI-D plus control and analog audio transmitter
3 Da-Lite	Custom 28'x9'	Custom Screen with Ultra Wide Angle
1 NEC	E224WI-BK	22" Eco-Friendly Widescreen Desktop Monitor w/ IPS Panel and LED Backlighting, VGA, DVI-D, and Displayport connections, VESA mount
1 Middle Atlantic Products	RM-LCD-PNLK	3 Space LCD Panel Mount with Tilt
1 Middle Atlantic Products	SS	Sliding Shelf
3 SONY	PMWF55	CineAlta 4K PMW Series HD Camcorder with 4K SDI output (4 3G-SDI 60P outputs)
3 Red	Pro Zoom	18-85mm PL mount T2.9 760-0016
3 SONY	ACDN10	AC adaptor/charger for PMWF55 PMWF5
3 SONY	RMB170	Handheld remote control unit for PMWF5 PMWF55
3 Custom	4K Camera Mount	Isolated camera platform
1 Manfrotto	509HD	Professional Video Head, Load Capacity up to 29 lb, 100mm half ball
1 Alan Gordan Enterprises	#1004-HIHAT-100	100mm Ball Hi-Hat; Black Cast Aluminum; no board
3 Evertz	3405FRM-BNC	Fiber Optic SFP BNC mini-frame, single power supply, no SFP included
3 Evertz	3405T13-2	Dual TX Evertz SFP
1 Evertz	3405FR-BNC	Fiber optic SFP frame with BNC type connectors
1 Evertz	3405PSX	External power supply brick for 3405FR SFP
6 Evertz	34050013-DA4	3G/HD/SD SFP Receiver, reclocking optical loop output with dual reclocking electrical outputs when used in BNC Frame
<b>Ice Club</b>		
6 Fulcrum Acoustic	Model M	Dual 12 inch Coaxial Loudspeaker, 75x75. Coordinate color with Architect
5 Fulcrum Acoustic	Model S	Dual 8 inch Coaxial Loudspeaker, 100x100. Coordinate color with Architect
3 Fulcrum Acoustic	US221	Dual 21 inch Direct-Radiating Subwoofer, Coordinate color with Architect
7 JBL	CONTROL 26CT	Control 26C with Transformer. Coordinate color with Architect
4 JBL	CONTROL 226C/T	6.5" Coax Ceiling Loudspeaker with Transformer. Coordinate color with Architect
2 Crown	DCi 8 300N	Amplifier: 8 Channels at 300W with Blu-Link
1 Crown	DCi 4 600N	Amplifier: 4 Channels at 600W with Blu-Link
2 Crown	DCi 4 1250N	Amplifier: 4 Channels at 1250W with Blu-Link
1 BSS	BLU-806	DSP with Dante & Blu-Link
3 BSS	BLUCARD-IN	4 Chanel Analog Input Card
1 BSS	BLUCARD-OUT	4 Chanel Analog Output Card
1 D&M Professional	DN-700H	Network Audio / USB Player and AM/FM Tuner
2 Middle Atlantic Products	BGR-4532	45 Space , 32" Deep Rack with Rear Door
1 Middle Atlantic Products	BSPN-45-32	Pair of Side Panels for BGR-4532
2 Middle Atlantic Products	VFD-45A	Curved Vented Front Door for 45 Space BGR Racks
1 Shure	ULXD4Q	Quad Digital Wireless Receiver
2 Shure	ULXD1	Digital Wireless Bodypack Transmitter with Miniature 4-Pin Connector

MINNESOTA MULTI-PURPOSE STADIUM  
MINNEAPOLIS, MINNESOTA

2 Shure	ULXD2/B87A	Handheld Transmitter with BETA 87A Microphone
1 Listen Technologies	LT-800-216-01	Stationary RF Transmitter (216 MHz) (North America)
1 Listen Technologies	LA-124	90deg Helical Antenna (216 MHz)
1 Listen Technologies	LA-326	Universal Rack Mounting Kit
1 Crestron	CP3	3-Series control processor
1 Crestron	TSW-750	7" LCD touchscreen wall mount
1 Evertz	3405FR-BNC	Fiber optic SFP frame with BNC type connectors
6 Barco	RLM W12 w/ Lens	12k ANSI Lumen WUXGA projector with lens
1 Coolux	Custom Quote # 14-2370	(4) MP-Pro RM3 Frame with (4) 3G-SDI input each and Management Server
3 Extron	DSC HD-3G A	HDMI to HD-SDI converter with scaling
1 Evertz	3405T13-2	Dual TX Evertz SFP
1 Evertz	3405R-2	Dual RX Evertz SFP
6 Extron	DTP DVI 230 RX	Single link DVI-D plus control and analog audio receiver
6 Extron	DTP DVI 230 TX	Single link DVI-D plus control and analog audio transmitter
3 Da-Lite	Custom 28'x9'	Custom Screen with Ultra Wide Angle
1 NEC	E224WI-BK	22" Eco-Friendly Widescreen Desktop Monitor w/ IPS Panel and LED Backlighting, VGA, DVI-D, and Displayport connections, VESA mount
1 Middle Atlantic Products	RM-LCD-PNLK	3 Space LCD Panel Mount with Tilt
1 Middle Atlantic Products	SS	Sliding Shelf
1 Evertz	3405FR-BNC	Fiber optic SFP frame with BNC type connectors
1 Evertz	3405PSX	External power supply brick for 3405FR SFP
3 Evertz	3405R-2	Dual RX Evertz SFP
<b>Club Purple</b>		
39 Fulcrum Acoustic	Model P	8 inch Coaxial Loudspeaker, 100x100. Coordinate color with Architect
11 Danley Sound Labs	TH112	Subwoofer: Single 12". Coordinate color with Architect.
6 JBL	CONTROL 26CT	Control 26C with Transformer. Coordinate color with Architect
14 Fulcrum Acoustic	RX699-MT60	6.5 inch Coaxial Loudspeaker with Transformer, 90x90. Coordinate color with Architect
2 Fulcrum Acoustic	Model S	Dual 8 inch Coaxial Loudspeaker, 100x100. Coordinate color with Architect
5 Crown	DCi 8 300N	Amplifier: 8 Channels at 300W with Blu-Link
3 Crown	DCi 4 1250N	Amplifier: 4 Channels at 1250W with Blu-Link
1 Crown	DCi 8 600N	Amplifier: 8 Channels at 600W with Blu-Link
1 BSS	BLU-806	DSP with Dante & Blu-Link
3 BSS	BLUCARD-IN	4 Chanel Analog Input Card
1 BSS	BLUCARD-OUT	4 Chanel Analog Output Card
1 D&M Professional	DN-700H	Network Audio / USB Player and AM/FM Tuner
1 Shure	ULXD4Q	Quad Digital Wireless Receiver
2 Shure	ULXD1	Digital Wireless Bodypack Transmitter with Miniature 4-Pin Connector
2 Shure	ULXD2/B87A	Handheld Transmitter with BETA 87A Microphone
1 Listen Technologies	LT-800-216-01	Stationary RF Transmitter (216 MHz) (North America)



MINNESOTA MULTI-PURPOSE STADIUM  
MINNEAPOLIS, MINNESOTA

1 Listen Technologies	LA-124	90deg Helical Antenna (216 MHz)
1 Listen Technologies	LA-326	Universal Rack Mounting Kit
0 DiGiCo	X-SD11i-2P	DiGiCo SD11i Control Surface with MADI; D-Rack w/ Dual PSU
0 Sound Construction and Supply	R8-1-ST-16D-MP-V	8-Space, Single Bay, 16" Deep, Maple Trim, Veneered Rack
0 Sound Construction and Supply	AD-R14+13-V	AD Custom 13 Space over 14 Space Mixer Cart
1 Crestron	CP3	A compact, rack-mountable 3-Series <sup>®</sup> control processor with immense power and numerous integrated control ports.
1 Crestron	TSW-750	7" LCD touchscreen wall mount
2 Middle Atlantic Products	BGR-4532	45 Space , 32" Deep Rack with Rear Door
1 Middle Atlantic Products	BSPN-45-32	Pair of Side Panels for BGR-4532
2 Middle Atlantic Products	VFD-45A	Curved Vented Front Door for 45 Space BGR Racks
1 Oppo	BDP-103	Blu-Ray player with RS-232
6 Owner Furnished	55" Ultra-Narrow Bezel Display	55" Ultra Narrow Bezel LED LCD Display, 5.5mm Bezel, 1080p, w/ Display Port
6 Owner Furnished	Chief LSMVU	Fusion Pull-Out, Large
6 Misc	Budget	LCD Monitor Mounting
0 Crestron	DM-MD16X16	16x16 Digital Media Switcher frame
0 Crestron	DMC-HD	HDMI Input Card for DM Switchers
0 Crestron	DMC-C	DigitalMedia 8G+ Input Card for DM Switchers
0 Crestron	DM-TX-200-C-2G	DigitalMedia 8G+ Transmitter 200
0 Crestron	PWE-4803RU	PoE Injector
0 Crestron	DMCO-5555	8 DM 8G+ w/4 HDMI Output Card for DM-MD16X16
0 Crestron	DMCO-5300	2 DM 8G+ w/1 HDMI & 2 HDMI w/2 Stereo Analog Audio Output Card for DM-MD16X16
0 Crestron	DM-RMC-Scale-C	DigitalMedia 8G+ Reciever and Room Controller with Scaled output and video wall processing
2 Extron	XTP T UWP 202 Black	Long Distance Two Input XTP Transmitter - Black Decora(r) Wallplate
2 Extron	XTP SR HDMI	Long Distance XTP Scaling Receiver
2 Extron	XTP PI 100	Power Injector for XTP and Pro Series Control Systems, Supplies power to one XTP extender, IPL Pro control processor, or TouchLink Pro touchpanel,
1 Planar	Custom VCS Gen 4	Custom Dual VCS Gen4 Chassis, (10) DisplayPort Outputs, (7) 1080p HDMI/DVI inputs, and (6) 1080p DisplayPort Inputs
1 Mac Pro	6-Core and Dual GPU	Desktop Apple computer, 6-Core 3.5 GHz, 16GB RAM, Dual AMD D500, up to three 4k displays or six thunderbolt displays, 256 GB flash storage
1 Sedna Presentor	Presenter Player Pro	resenter Player is the playout application that displays your digital signage projects. The Player displays content according to schedules defined in Presenter Creator, which are then committed to the Player through, for example, LAN networks or from designated web spaces.
1 Extron	SW 12A	Stereo Audio Switcher
6 Extron	DTP R DP 330	Long Distance DisplayPort Twisted Pair Extender, Reciever, 330' over shielded CATx cable
6 Extron	DTP T DP 330	Long Distance DisplayPort Twisted Pair Extender, Transmitter, 330' over shielded CATx cable

IDIBRI 2013125

ANCILLARY AV SYSTEMS  
2014-12-19 CCD150

274134-A8

MINNESOTA MULTI-PURPOSE STADIUM  
MINNEAPOLIS, MINNESOTA

**Chairman's Lounge (Alt 1)**

8 JBL	CONTROL 226C/T	6.5" Coax Ceiling Loudspeaker with Transformer. Coordinate color with Architect
1 Crown	DCi 8 300N	Crown DCi 8 300N

**Lower Club Lounge (Alt 2)**

12 JBL	CONTROL 226C/T	6.5" Coax Ceiling Loudspeaker with Transformer. Coordinate color with Architect
3 JBL	CONTROL 312CS	12" In-Ceiling Subwoofer.
3 JBL	MTC-300SG12	Square Grille for 12" Models. Coordinate color with Architect.
3 JBL	MTC-300BB12	Back Box for 12" Speaker Models
1 Crown	DCi 8 300N	Crown DCi 8 300N
1 Crown	DCi 8 600N	Crown DCi 8 600N

**Field Suites (23)**

23 Middle Atlantic Products	SRSR-4-16	16 Space Rotating Sliding Rail Rack
23 Furman	PL-8C	15A Power Conditioner
23 Extron	IN1606	Six Input HDCP-Compliant Scaling Presentation Switcher
0 Innovox	HMF-1	Flex Synergy Horizontal Module Frame for display up to 103" Coordinate dimensions with display
0 Innovox	URM-1	Flex Synergy HF Module
0 Innovox	MSM-5	Flex Synergy LF Module
0 Innovox	URM-1SM	Flex Synergy HF Module - Surface Mount Version
0 Innovox	DSP Amp 2	Flex Synergy 2 Chanel DSP Amplifier
23 Global Cache	IP2SL	IP to Serial RS232 RS-232
23 Apple	iPad 16gb	iPad Wi-Fi 16GB Black
23 LaunchPort	BaseStation	iPad Table Top Base Station
23 LaunchPort	AP.4 Sleeve	iPad Inductive Charging Case
23 Lab.Gruppen	Lucia 120/2	High Efficiency Install Amplifier. Output Power 2 x60 /60 /60 /30 W
69 JBL	CONTROL 28-WH	8" Two-Way Vented System, Built-In Invisiball® Installation System, 175W Power Program, 8 ohms. White
1 BSS	BLU-160	DSP with Blu-Link
2 BSS	BLUCARD-IN	4 Chanel Analog Input Card
2 BSS	BLUCARD-OUT	4 Chanel Analog Output Card
2 BSS	BLU-BIB	8 Channel DSP Input Box
2 BSS	BLU-BOB1	8 Channel DSP Output Box
3 Crestron	AV3	3-series Control System

**Executive Suites (12)**

12 Middle Atlantic Products	SRSR-4-16	16 Space Rotating Sliding Rail Rack
12 Furman	PL-8C	15A Power Conditioner
12 Extron	IN1606	Six Input HDCP-Compliant Scaling Presentation Switcher
0 Innovox	HMF-1	Flex Synergy Horizontal Module Frame for display up to 103" Coordinate dimensions with display
0 Innovox	URM-1	Flex Synergy HF Module
0 Innovox	MSM-5	Flex Synergy LF Module
0 Innovox	URM-1SM	Flex Synergy HF Module - Surface Mount Version
0 Innovox	DSP Amp 2	Flex Synergy 2 Chanel DSP Amplifier
12 Global Cache	IP2SL	IP to Serial RS232 RS-232
12 Apple	iPad 16gb	iPad Wi-Fi 16GB Black
12 LaunchPort	BaseStation	iPad Table Top Base Station

IDIBRI 2013125

ANCILLARY AV SYSTEMS  
2014-12-19 CCD150

274134-A9

MINNESOTA MULTI-PURPOSE STADIUM  
MINNEAPOLIS, MINNESOTA

12 LaunchPort	AP.4 Sleeve	iPad Inductive Charging Case
12 Lab.Gruppen	Lucia 120/2	High Efficiency Install Amplifier. Output Power 2 x60 /60 /60 /30 W
42 JBL	CONTROL 226C/T	6.5" Coax Ceiling Loudspeaker with Transformer. Coordinate color with Architect
1 BSS	BLU-100	DSP 12x8 with Blu-Link
2 BSS	BLU-BOB1	8 Channel DSP Output Box
2 Crestron	AV3	3-series Control System
1 Crown	DCi 4 300N	Amplifier: 4 Channels at 300W with Blu-Link
8 JBL	CONTROL 26CT	Control 26C with Transformer. Coordinate color with Architect
28 JBL	CONTROL 226C/T	6.5" Coax Ceiling Loudspeaker with Transformer. Coordinate color with Architect
4 JBL	Control 65P/T	Compact Full-Range Pendant Speaker with 10W 70V/100V multi-tap transformer

**Main Suites (27)**

27 Middle Atlantic Products	SRSR-4-16	16 Space Rotating Sliding Rail Rack
27 Furman	PL-8C	15A Power Conditioner
27 Extron	IN1606	Six Input HDCP-Compliant Scaling Presentation Switcher
0 Innovox	HMF-1	Flex Synergy Horizontal Module Frame for display up to 103" Coordinate dimensions with display
0 Innovox	URM-1	Flex Synergy HF Module
0 Innovox	MSM-5	Flex Synergy LF Module
0 Innovox	URM-1SM	Flex Synergy HF Module - Surface Mount Version
0 Innovox	DSP Amp 2	Flex Synergy 2 Chanel DSP Amplifier
27 Global Cache	IP2SL	IP to Serial RS232 RS-232
27 Apple	iPad 16gb	iPad Wi-Fi 16GB Black
27 LaunchPort	BaseStation	iPad Table Top Base Station
27 LaunchPort	AP.4 Sleeve	iPad Inductive Charging Case
27 Lab.Gruppen	Lucia 120/2	High Efficiency Install Amplifier. Output Power 2 x60 /60 /60 /30 W
81 JBL	CONTROL 226C/T	6.5" Coax Ceiling Loudspeaker. True-Broadband 120° Coverage. 150 Watts, 47 Hz to 19kHz Frequency Response
2 BSS	BLU-806	DSP with Dante & Blu-Link
4 BSS	BLUCARD-IN	4 Chanel Analog Input Card
4 BSS	BLUCARD-OUT	4 Chanel Analog Output Card
2 BSS	BLU-BOB1	8 Channel DSP Output Box
2 BSS	BLU-BIB	8 Channel DSP Input Box
0 Middle Atlantic Products	DWR-16-22	16 Space Sectional Wall Rack
0 Middle Atlantic Products	LVFD-16	Vented Front Door for 16 Space ERK, MRK, WRK AND SR Racks
1 Middle Atlantic Products	BGR-4532	45 Space , 32" Deep Rack with Rear Door
1 Middle Atlantic Products	BSPN-45-32	Pair of Side Panels for BGR-4532
1 Middle Atlantic Products	VFD-45A	Curved Vented Front Door for 45 Space BGR Racks
4 Crestron	AV3	3-series Control System
2 Crown	DCi 2 300N	Amplifier: 2 Channels at 300W with Blu-Link
46 JBL	CONTROL 26CT	Control 26C with Transformer. Coordinate color with Architect

**Upper Suites (36)**

36 Middle Atlantic Products	SRSR-4-16	16 Space Rotating Sliding Rail Rack
36 Furman	PL-8C	15A Power Conditioner

MINNESOTA MULTI-PURPOSE STADIUM  
MINNEAPOLIS, MINNESOTA

36 Extron	IN1606	Six Input HDCP-Compliant Scaling Presentation Switcher
0 Innovox	HMF-1	Flex Synergy Horizontal Module Frame for display up to 103" Coordinate dimensions with display
0 Innovox	URM-1	Flex Synergy HF Module
0 Innovox	MSM-5	Flex Synergy LF Module
0 Innovox	URM-1SM	Flex Synergy HF Module - Surface Mount Version
0 Innovox	DSP Amp 2	Flex Synergy 2 Chanel DSP Amplifier
36 Global Cache	IP2SL	IP to Serial RS232 RS-232
36 Apple	iPad 16gb	iPad Wi-Fi 16GB Black
36 LaunchPort	BaseStation	iPad Table Top Base Station
36 LaunchPort	AP.4 Sleeve	iPad Inductive Charging Case
36 Lab.Gruppen	Lucia 120/2	High Efficiency Install Amplifier. Output Power 2 x60 /60 /60 /30 W
108 JBL	Control 67P/T	Extended-Bass Full-Range Pendant Speaker with RBI. 6-1/2" LF & silk dome HF, RBI Radiation Boundary Integrator® technology with 120 degree conical coverage
1 BSS	BLU-806	DSP with Dante & Blu-Link
1 BSS	BLU-160	DSP with Blu-Link
4 BSS	BLUCARD-IN	4 Chanel Analog Input Card
4 BSS	BLUCARD-OUT	4 Chanel Analog Output Card
4 BSS	BLU-BOB1	8 Channel DSP Output Box
4 BSS	BLU-BIB	8 Channel DSP Input Box
0 Middle Atlantic Products	DWR-16-22	16 Space Sectional Wall Rack
0 Middle Atlantic Products	LVFD-16	Vented Front Door for 16 Space ERK, MRK, WRK AND SR Racks
5 Crestron	AV3	3-series Control System
2 Crown	DCi 4 300N	Amplifier: 4 Channels at 300W with Blu-Link
79 JBL	CONTROL 26CT	Control 26C with Transformer. Coordinate color with Architect
7 JBL	Control 65P/T	Compact Full-Range Pendant Speaker with 10W 70V/100V multi-tap transformer
<b>Suite Head-End Processing</b>		
8 Denon Professional	DN-700H	Network Audio / USB Player and AM/FM Tuner
<b>Upper Suites East (Alt 4) (18)</b>		
18 Furman	PL-8C	15A Power Conditioner
0 Extron	IN1606	Six Input HDCP-Compliant Scaling Presentation Switcher
0 Innovox	HMF-1	Flex Synergy Horizontal Module Frame for display up to 103" Coordinate dimensions with display
0 Innovox	URM-1	Flex Synergy HF Module
0 Innovox	MSM-5	Flex Synergy LF Module
0 Innovox	URM-1SM	Flex Synergy HF Module - Surface Mount Version
0 Innovox	DSP Amp 2	Flex Synergy 2 Chanel DSP Amplifier
18 Global Cache	IP2SL	IP to Serial RS232 RS-232
18 Apple	iPad 16gb	iPad Wi-Fi 16GB Black
18 LaunchPort	BaseStation	iPad Table Top Base Station
18 LaunchPort	AP.4 Sleeve	iPad Inductive Charging Case
18 Lab.Gruppen	Lucia 120/2	High Efficiency Install Amplifier. Output Power 2 x60 /60 /60 /30 W
55 JBL	Control 67P/T	Extended-Bass Full-Range Pendant Speaker with RBI. 6-1/2" LF & silk dome HF, RBI Radiation Boundary Integrator® technology with 120 degree conical coverage



MINNESOTA MULTI-PURPOSE STADIUM  
MINNEAPOLIS, MINNESOTA

1 BSS	BLU-806	DSP with Dante & Blu-Link
2 BSS	BLUCARD-IN	4 Chanel Analog Input Card
2 BSS	BLUCARD-OUT	4 Chanel Analog Output Card
2 BSS	BLU-BOB1	8 Channel DSP Output Box
2 BSS	BLU-BIB	8 Channel DSP Input Box
1 Middle Atlantic Products	DWR-16-22	16 Space Sectional Wall Rack
1 Middle Atlantic Products	LVFD-16	Vented Front Door for 16 Space ERK, MRK, WRK AND SR Racks
3 Crestron	AV3	3-series Control System
1 Crown	DCi 4 300N	Amplifier: 4 Channels at 300W with Blu-Link
30 JBL	CONTROL 26CT	Control 26C with Transformer. Coordinate color with Architect

**Event Level Mini Suites (ALT 12) (8)**

0 Innovox	HMF-1	Flex Synergy Horizontal Module Frame for display up to 103" Coordinate dimensions with display
0 Innovox	URM-1	Flex Synergy HF Module
0 Innovox	MSM-5	Flex Synergy LF Module
0 Innovox	DSP Amp 2	Flex Synergy 2 Chanel DSP Amplifier
8 Apple	iPad 16gb	iPad Wi-Fi 16GB Black
8 LaunchPort	BaseStation	iPad Table Top Base Station
8 LaunchPort	AP.4 Sleeve	iPad Inductive Charging Case
8 RDL	TX-J2	Unbalanced Input Transformer
8 Crestron	HD-TX3-C	HDMI over HDBaseT Transmitter, uncompressed HD video and audio up to 330'
8 Crestron	DM-RMC-100-C	DigitalMedia 8G+tm Receiver & Room Controller 100
1 Crown	DCi 8 300N	Amplifier: 8 Channels at 300W with Blu-Link
16 JBL	CONTROL 28-WH	8" Two-Way Vented System, Built-In Invisiball® Installation System, 175W Power Program, 8 ohms. White
2 BSS	BLU-BIB	8 Channel DSP Input Box
1 BSS	BLU-BOB1	8 Channel DSP Output Box
1 Crestron	AV3	3-series Control System
1 Crestron	DM-MD16X16	16x16 Digital Media Switcher frame
8 Crestron	DMC-C	DigitalMedia 8G+ Input Card for DM Switchers
8 Crestron	DMC-HD	HDMI Input Card for DM Switchers
1 Crestron	DMCO-5555	8 DM 8G+ w/4 HDMI Output Card for DM-MD16X16
1 Crestron	DMCO-3333	8 HDMI w/8 Stereo Analog Audio Output Card for DM-MD16X16
8 Extron	ASA 131	Passive Audio Summer, Balanced Output
1 Cisco	SG300-10MP	10 port Gigabit Max-POE Managed Switch

**Upper Suites North (Alt 13) (10)**

10 Furman	PL-8C	15A Power Conditioner
10 Extron	IN1606	Six Input HDCP-Compliant Scaling Presentation Switcher
0 Innovox	HMF-1	Flex Synergy Horizontal Module Frame for display up to 103"
0 Innovox	URM-1	Flex Synergy HF Module
0 Innovox	MSM-5	Flex Synergy LF Module
0 Innovox	URM-1SM	Flex Synergy HF Module - Surface Mount Version
0 Innovox	DSP Amp 2	Flex Synergy 2 Chanel DSP Amplifier
10 Global Cache	IP2SL	IP to Serial RS232 RS-232
10 Apple	iPad 16gb	iPad Wi-Fi 16GB Black
10 LaunchPort	BaseStation	iPad Table Top Base Station

IDIBRI 2013125

ANCILLARY AV SYSTEMS  
2014-12-19 CCD150

274134-A12

MINNESOTA MULTI-PURPOSE STADIUM  
MINNEAPOLIS, MINNESOTA

10 LaunchPort	AP.4 Sleeve	iPad Inductive Charging Case
10 Lab.Gruppen	Lucia 120/2	High Efficiency Install Amplifier. Output Power 2 x60 /60 /60 /30 W
30 JBL	Control 67P/T	Extended-Bass Full-Range Pendant Speaker with RBI. 6-1/2" LF & silk dome HF, RBI Radiation Boundary Integrator® technology with 120 degree conical coverage
1 BSS	BLU-BOB1	8 Channel DSP Output Box
1 BSS	BLU-BIB	8 Channel DSP Input Box
2 Crestron	AV3	3-series Control System

**Vikings Locker Rm**

18 Fulcrum Acoustic	RX699	6.5 inch Coaxial Loudspeaker, 90x90. Coordinate color with Arch
4 Fulcrum Acoustic	Sub115	15 inch Direct-Radiating Subwoofer. Coordinati color with Archi
1 Crown	DCi 4 1250N	Amplifier: 84 Channels at 1250W with Blu-Link
2 Crown	DCi 8 300N	Amplifier: 8 Channels at 300W with Blu-Link
1 BSS	BLU-160	DSP with Blu-Link
2 BSS	BLUCARD-OUT	4 analog output card for Soundweb London Chassis
2 BSS	BLUCARD-IN	4 Chanel Digital Input Card
1 D&M Professional	DN-700H	Network Audio / USB Player and AM/FM Tuner
1 Whirlwind	PCDI	Direct Box - dual with RCA, 1/4" and 1/8" inputs
1 Oppo	BDP-103	Blu-Ray player with RS-232
1 Global Cache	IP2SL	IP to Serial RS232 RS-232
1 Apple	iTV	Apple TV
0 Crestron	DM-TX-200-C-2G	DigitalMedia 8G+ Transmitter 200
6 Crestron	DMC-C	DigitalMedia 8G+ Input Card for DM Switchers
0 Crestron	PWE-4803RU	PoE Injector
1 Crestron	DMC-HD	HDMI Input Card for DM Switchers
2 Crestron	DM-RMC-Scale-C	DigitalMedia 8G+ Reciever and Room Controller with Scaled output and video wall processing
0 Christie Digital	DHD800	DHD800 1-DLP, Dual Lamp, HD 1920x1080 8000lm
0 Christie Digital	For DHD700, DHD800, DS+750 103-120104-02	Lens PROJ 1.8-2.8:1 Standard
3 Crestron	TSW-750	7" LCD touchscreen wall mount
0 Da-Lite	87860	Tensioned Cosmopolitan Electrol - HDTV Format; 65" X 116"; HC Da
2 Dell	Optiplex 9020 Small Form Factor	Small Form Factor desktop PC w/ Intel i7, windows 7 pro, 8GB Ram, AMD Radeon HD 8570, and 500GB SSD
4 Crestron	HD-TX3-C	HDMI over HDBaseT Transmitter, uncompressed HD video and audio up to 330'
2 Crestron	DM-TX-201-C	DigitalMedia 8G+â,,ç Transmitter 201
1 Cisco	SG300-28P	28-Port Gigabit PoE Managed Switch
2 Owner Furnished	80" LED Touchscreen	80", 1080p LED LCD Display w/ 6 touchpoint IR overlay, USB connectivity, and wall mounting system

**Locker Rooms**

1 Christie Digital	LW400 black	LW400 3LCD, WXGA, 4000lm, single lamp, with 1.5-1.8:1 lens
1 Da-Lite	40141	84" x 84" Picture King Tripod base protable Screen

MINNESOTA MULTI-PURPOSE STADIUM  
MINNEAPOLIS, MINNESOTA

**Interview Rooms (2)**

2	Crestron	PWE-4803RU	PoE Injector
14	JBL	CONTROL 26CT	Control 26C with Transformer. Coordinate color with Architect
1	BSS	BLU-100	DSP 12x8 with Blu-Link
2	BSS	BLU-BOB1	8 Channel DSP Output Box
1	Crown	DCi 8 300N	Amplifier: 8 Channels at 300W with Blu-Link
4	Shure	ULXD2/B87A	Handheld Transmitter with BETA 87A Microphone
2	Shure	ULXD4D	Dual Digital Wireless Receiver
4	RF Venue	CX22	UHF Ceiling Antenna
2	Crestron	TSW-550	5" Touch Screen

**Vikings Meeting Rooms (2)**

1	Custom	Wall Panel	Custom wall panel with HDMI input and HDMI cable to display or projector
1	Crestron	TSW-750	7" LCD touchscreen wall mount
1	Crestron	MP-B10-W	Media Presentation Button Panel B10, 10 buttons & volume control; white
10	JBL	CONTROL 26CT	Control 26C with Transformer. Coordinate color with Architect
1	RDL	TX-J2	Unbalanced Input Transformer
1	Shure	ULXD2/B87A	Handheld Transmitter with BETA 87A Microphone
1	Shure	ULXD4D	Dual Digital Wireless Receiver
2	Shure	ULXD1	Digital Wireless Bodypack Transmitter with Miniature 4-Pin Connector
2	Shure	WL185	Microflex Cardioid Lavalier Microphone
2	RF Venue	CX22	UHF Ceiling Antenna
1	Dell	Optiplex 9020 Small Form Factor	Small Form Factor desktop PC w/ Intel i7, windows 7 pro, 8GB Ram, AMD Radeon HD 8570, and 500GB SSD
1	Middle Atlantic Products	RFR-1628BR	28W16SP28DP RFR RACK BR
1	Oppo	BDP-103	Blu-Ray player with RS-232
1	Global Cache	IP2SL	IP to Serial RS232 RS-232
1	Apple	iTV	Apple TV
4	Crestron	DMC-C	DigitalMedia 8G+ Input Card for DM Switchers
1	Crestron	DMC-HD	HDMI Input Card for DM Switchers
1	Crestron	DM-RMC-Scale-C	DigitalMedia 8G+ Receiver and Room Controller with Scaled output and video wall processing
3	Crestron	HD-TX3-C	HDMI over HDBaseT Transmitter, uncompressed HD video and audio up to 330'
1	Crestron	DM-TX-201-C	DigitalMedia 8G+ Transmitter 201
1	Owner Furnished	80" LED Touchscreen	80", 1080p LED LCD Display w/ 6 touchpoint IR overlay, USB connectivity, and wall mounting system

**Distributed Speakers: Hallways, Offices, Support Spaces.**

QPD			"Quantity Per Drawings"
QPD	JBL	CONTROL 25AV	2-Way Indoor/Outdoor Loudspeaker with Transformer, Coordinate color with Architect
QPD	JBL	CONTROL 26CT	Control 26C with Transformer. Coordinate color with Architect
QPD	JBL	CONTROL 226C/T	6.5" Coax Ceiling Loudspeaker with Transformer. Coordinate color with Architect

MINNESOTA MULTI-PURPOSE STADIUM  
MINNEAPOLIS, MINNESOTA

QPD	JBL	Control 67P/T	Pendant Speaker with Transformer. Coordinate color with Architect
QPD	JBL	Control 65P/T	Pendant Speaker with Transformer. Coordinate color with Architect
QPD	Crown	DCi 2 300N	Amplifier: 2 Channels at 300W with Blu-Link
QPD	Crown	DCi 4 300N	Amplifier: 4 Channels at 300W with Blu-Link
QPD	Crown	DCi 8 300N	Amplifier: 8 Channels at 300W with Blu-Link
QPD	Crown	DCi 2 600N	Amplifier: 8 Channels at 600W with Blu-Link
QPD	Crown	DCi 4 600N	Amplifier: 4 Channels at 600W with Blu-Link
QPD	Crown	DCi 8 600N	Amplifier: 8 Channels at 600W with Blu-Link
QPD	Crown	DCi 2 1250N	Amplifier: 2 Channels at 1250W with Blu-Link
QPD	Crown	DCi 4 1250N	Amplifier: 4 Channels at 1250W with Blu-Link

**Ushers Conference**

1	Christie Digital	LW401	LW401 3LCD, WXGA, Pro, 4000lm, single lamp, with lens 1.5-2.2:1
1	Da-Lite	34568	Advantage Deluxe Electrol - 16:10 Wide Format; 50" X 80"; Matte White
1	Chief	RPMAU	Universal RPMA
1	Crestron	MPC-M10-B-T	Media Presentation Controller M10 - 10 buttons & volume control; 1 RS-232, 1 IR, 4 input, 2 relay; black, textured; includes PW-2407RU

**MSFA Offices**

-10	JBL	CONTROL 26CT	Control 26C with Transformer. Coordinate color with Architect
10	JBL	CONTROL 126WT	Control 126W With Transformer for Use on a 70.7V or 100V Distributed Line. Selectable Taps at 30W, 15W, and 7.5W (Plus 3.7W at 70V Only). (Priced as Each, Sold in Pairs).
2	Crestron	HD-RX3-C	HDMI over HDBaseT Receiver
2	Crestron	HD-TX3-C	HDMI over HDBaseT Transmitter
2	Extron	Cable Cubby 300S Black 60-526-01	Furniture-Mountable Enclosure with Square Bezel for cables, AAPs
2	Crestron	MPC-M10-B-T	Media Presentation Controller
2	Extron	XPA 2001-70V	Mono 70 V Power Amplifier - 200 Watts
1	Polycom	RealPresence Group Series Media Center w/ 55" Display	Video Conferencing Cart with a single 55" display, Polycom Group

**Vikings Offices**

0	Da-Lite	37592	Tensioned Contour Electrol - 16:10 Wide Format; 60" X 96"; Da-Matte
0	Christie Digital	LWU501i	LWU501i (White) 3LCD, WUXGA, 5000lm, single lamp, with 1.5-3.0:
1	Crestron	DMPS-300-C	DigitalMedia Presentation System 300
2	Crestron	HD-TX3-C	HDMI over HDBaseT Transmitter, uncompressed HD video and audio
2	Crestron	DM-RMC-100-C	DigitalMedia 8G+ Receiver & Room Controller 100
2	Extron	Cable Cubby 300S Black 60-526-01	Furniture-Mountable Enclosure with Square Bezel for cables, AAPs, and AC Power Outlets: US Power Outlet - Black Anodized

MINNESOTA MULTI-PURPOSE STADIUM  
MINNEAPOLIS, MINNESOTA

1 Polycom	Group 500	Polycom Group 500 package with codec, HD PTZ camera, tabletop mic pod, and remote control
1 Polycom	Group Series Tabletop Mic Array	Additional microphone array to expand microphone coverage to Group series package
1 Extron	XPA 2001-70V	Mono 70 V Power Amplifier - 200 Watts
1 Middle Atlantic Products	SRSR-4-16	16 Space Rotating Sliding Rail Rack
1 Furman	PL-8C	15A Power Conditioner
1 Crestron	PW-4818DU	48V Power Pack for PoDM
1 Crestron	TST-600-B-S	5.7" wireless touch screen
1 Crestron	CEN-ERFGW-POE	2-way RF Gateway supports Cresnet and Ethernet. Power over Cresnet or POE
1 Crestron	HD-RX3-C	HDMI over HDBaseT Receiver
1 Crestron	HD-TX3-C	HDMI over HDBaseT Transmitter
1 Extron	Cable Cubby 300S Black 60-526-01	Furniture-Mountable Enclosure with Square Bezel for cables, AAPs, and AC Power Outlets: US Power Outlet - Black Anodized
1 Crestron	MPC-M10-B-T	Media Presentation Controller M10 - 10 buttons & volume control; 1 RS-232, 1 IR, 4 input, 2 relay; black, textured; includes PW-2407RU
1 Extron	MPA 401-70V	Mono 70 V Power Amplifier - 40 Watts
<b>Digital Signage Video Walls</b>		
60 Owner Furnished	55" Ultra-Narrow Bezel Display	55" Ultra Narrow Bezel LED LCD Display, 5.5mm Bezel, 1080p, w/ Display Port
60 Owner Furnished	VideoWall Mount	Chief Fusion Pull-Out, Large
60 Extron	DTP T DP 330	Long Distance DisplayPort Twisted Pair Extender, Transmitter, 330' over shielded CATx cable
60 Extron	DTP R DP 330	Long Distance DisplayPort Twisted Pair Extender, Receiver, 330' over shielded CATx cable
10 Sedna Presentor	Presenter Creator Pro	Creation software for Sedna Presentor System, requires mac operating system
10 Mac Pro	6-Core and Dual GPU	Desktop Apple computer, 6-Core 3.5 GHz, 16GB RAM, Dual AMD D500, up to three 4k displays or six thunderbolt displays, 256 GB flash storage
10 Sedna Presentor	Presenter Player Pro	resenter Player is the playout application that displays your digital signage projects. The Player displays content according to schedules defined in Presenter Creator, which are then committed to the Player through, for example, LAN networks or from designated web spaces.
10 Planar	Custom VCS Gen 4	Single VCS Gen4 Chassis with i7 SBC & 8GB Ram, (6) DisplayPort Outputs, (4) 4k DisplayPort Inputs, and (6) 1080p Displayport Inputs
18 Owner Furnished	55" Ultra-Narrow Bezel Display	55" Ultra Narrow Bezel LED LCD Display, 5.5mm Bezel, 1080p, w/ Display Port
18 Owner Furnished	VideoWall Mount	Chief Fusion Pull-Out, Large
18 Extron	FOX II T DP MM	Fiber Optic Transmitter for DisplayPort, Audio, RS-232, and IR, Multi-Mode Fiber, 1000', Dual LC Fiber Connectors
18 Extron	FOX II R DP MM	Fiber Optic Receiver for DisplayPort, Audio, RS-232, and IR, Multi-Mode Fiber, 1000', Dual LC Fiber Connectors

MINNESOTA MULTI-PURPOSE STADIUM  
MINNEAPOLIS, MINNESOTA

3 Mac Pro	6-Core and Dual GPU	Desktop Apple computer, 6-Core 3.5 GHz, 16GB RAM, Dual AMD D500, up to three 4k displays or six thunderbolt displays, 256 GB flash storage
3 Sedna Presenter	Presenter Creator Pro	Creation software for Sedna Presenter System, requires mac operating system
3 Sedna Presenter	Presenter Player Pro	resenter Player is the playout application that displays your digital signage projects. The Player displays content according to schedules defined in Presenter Creator, which are then committed to the Player through, for example, LAN networks or from designated web spaces.
3 Planar	Custom VCS Gen 4	Single VCS Gen4 Chassis with i7 SBC & 8GB Ram, (6) DisplayPort Outputs, (4) 4k DisplayPort Inputs, and (6) 1080p Displayport Inputs
2 Middle Atlantic Products	DWR-16-22	16SP/22D WALLRACK BLACK
2 Middle Atlantic Products	VFD-16	16SP VENT.FR.DOOR,UNIV.BL
3 Middle Atlantic Products	BGR-4532	45 Space , 32" Deep Rack with Rear Door
2 Middle Atlantic Products	BSPN-45-32	Pair of Side Panels for BGR-4532
3 Middle Atlantic Products	VFD-45A	Curved Vented Front Door for 45 Space BGR Racks
3 Crestron	AV3	3-series Control System
1 Crestron	V15-B	V-Panel 15"VESA Mount HD Touch Screen Display, DM CAT, Black; includes V-IMCW and V-CBL-T3-B

**Flex Concession Main Concourse**

26 Owner Furnished	46" Ultra-Narrow Bezel Display	46" LED LCD ultra narrow bezel, commercial monitor, direct lit, 700 Nit, with ethernet control
26 Owner Furnished	VideoWall Mount	Chief Large Fusion, heigh adjustable, titl mount, portrait
9 Extron	DTP DVI 230 TX	Transmits single link DVI-D plus control and analog audio up to 230 feet (70 meters) over a single CATx cable
9 Extron	DTP DVI 230 RX	Receives single link DVI-D plus control and analog audio up to 230 feet (70 meters) over a single CATx cable
9 Datapath	x4	Display Controller, Single dual link DVI input, Four DVI outputs
2 Mac Pro	6-Core and Dual GPU	Desktop Apple computer, 6-Core 3.5 GHz, 16GB RAM, Dual AMD D500, up to three 4k displays or six thunderbolt displays, 256 GB flash storage
1 Sedna Presenter	Presenter Creator Pro	Creation software for Sedna Presenter System, requires mac operating system
2 Sedna Presenter	Presenter Player Pro	resenter Player is the playout application that displays your digital signage projects. The Player displays content according to schedules defined in Presenter Creator, which are then committed to the Player through, for example, LAN networks or from designated web spaces.
1 Middle Atlantic Products	PD-915R	9OUT, 15A, RACKMOUNT POWER

**Flex Concession Upper Concourse**

22 Owner Furnished	46" Ultra-Narrow Bezel Display	46" LED LCD ultra narrow bezel, commercial monitor, direct lit, 700 Nit, with ethernet control
22 Owner Furnished	VideoWall Mount	Chief Large Fusion, heigh adjustable, titl mount, portrait



MINNESOTA MULTI-PURPOSE STADIUM  
MINNEAPOLIS, MINNESOTA

8 Extron	DTP DVI 230 RX	Receives single link DVI-D plus control and analog audio up to 230 feet (70 meters) over a single CATx cable
8 Extron	DTP DVI 230 TX	Transmits single link DVI-D plus control and analog audio up to 230 feet (70 meters) over a single CATx cable
8 Datapath	x4	Display Controller, Single dual link DVI input, Four DVI outputs
2 Mac Pro	6-Core and Dual GPU	Desktop Apple computer, 6-Core 3.5 GHz, 16GB RAM, Dual AMD D500, up to three 4k displays or six thunderbolt displays, 256 GB flash storage
2 Sedna Presentor	Presenter Player Pro	resenter Player is the playout application that displays your digital signage projects. The Player displays content according to schedules defined in Presenter Creator, which are then committed to the Player through, for example, LAN networks or from designated web spaces.
1 Middle Atlantic Products	PD-915R	9OUT, 15A, RACKMOUNT POWER
1 Middle Atlantic Products	BGR-4532	45SP/32D MULTIBAY RACK
1 Middle Atlantic Products	BSPN-45-32	45SP/32DP SIDE PANELS
1 Middle Atlantic Products	VFD-45A	Curved Vented Front Door for 45 Space BGR Racks

**Red Zone Suite Lounges (3)**

3 Extron	IN1606	Six Input HDCP-Compliant Scaling Presentation Switcher
3 Global Cache	IP2SL	IP to Serial RS232 RS-232
3 Apple	iPad 16gb	iPad Wi-Fi 16GB Black
3 LaunchPort	BaseStation	iPad Table Top Base Station
3 LaunchPort	AP.4 Sleeve	iPad Inductive Charging Case
3 Furman	PL-8C	15A Power Conditioner
3 Middle Atlantic Products	SRSR-4-16	16 Space Rotating Sliding Rail Rack
27 JBL	CONTROL 226C/T	6.5" Coax Ceiling Loudspeaker. True-Broadband 120° Coverage. 150 Watts, 47 Hz to 19kHz Frequency Response, 90 dB Sensitivity. 1" Exit Compression Driver. 8 ohms Plus 70V/100V Taps at 60W, 30W, 15W (And 7.5W @ 70V). 13" Round Ported Baffle x 9.7" Deep. (Priced as Each, Sold in Pairs).
1 Crown	DCi 2 300N	DriveCore™, 2 channel amplifier technology. True Rack Density. Power points of 300W @ 4-ohm and 8-ohm in 2 channel configurations. 100V direct drive 300W amplification.
1 BSS	BLU-BIB	8-channel analog break-in box w/ BLU link & switchable Phantom Power per channel (half rack width)
1 BSS	RACK MOUNT KIT	Rack Mount Kit for up to two BLU-BIB / BLU-BOB devices (1U)





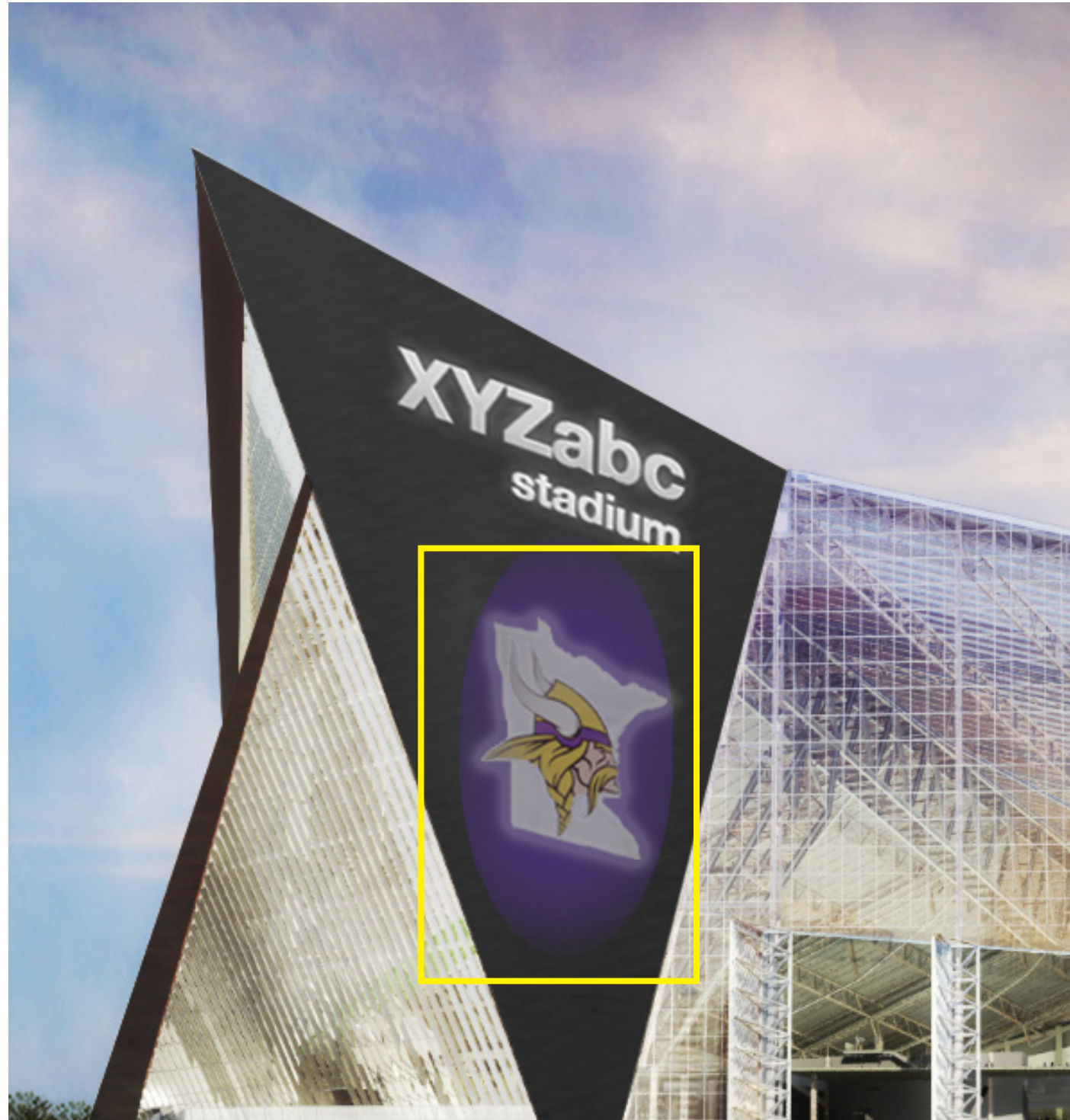
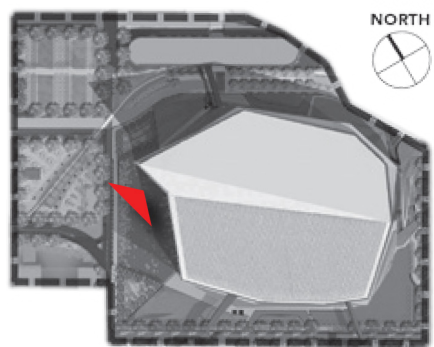
NEW VIKINGS STADIUM  
LED  
PROCUREMENT

---

DECEMBER 2014





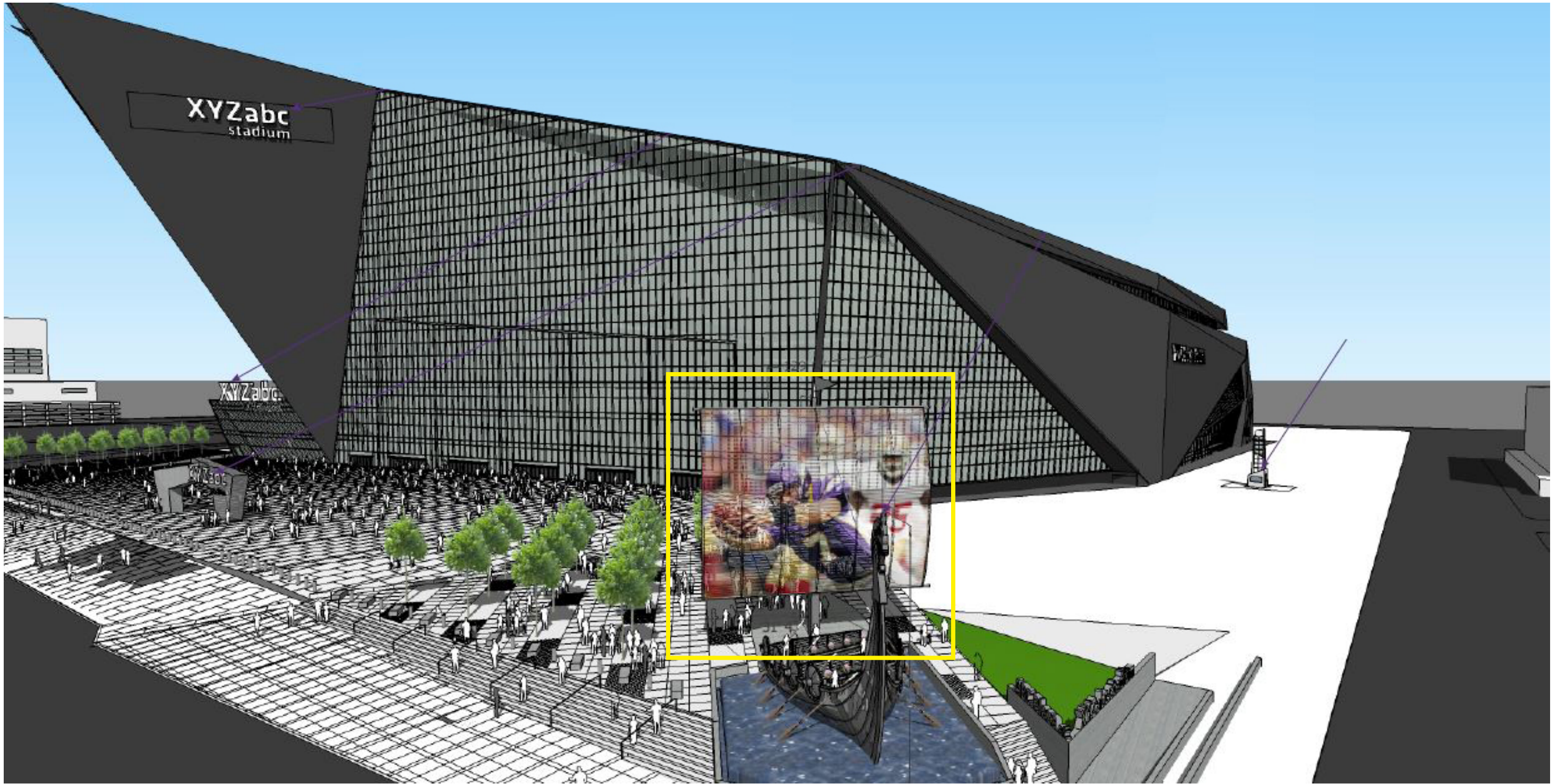


# WEST PROW FREE FORM LED

Dimensions: 70' W x 109' 5" H







## VIKINGS SHIP MARQUEE

LED Dimensions: 50' W x 40' H two sided



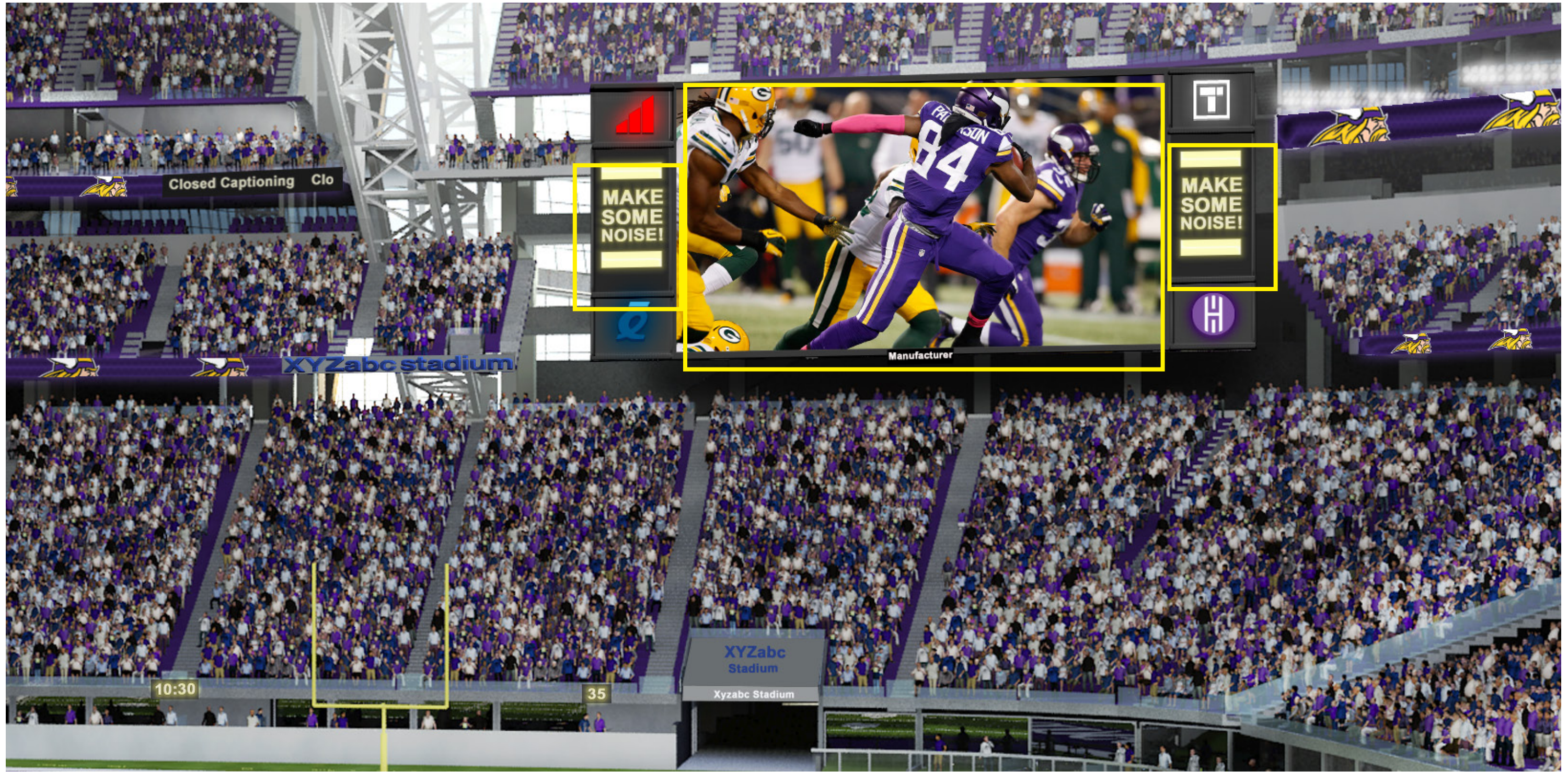


## WEST VIDEO BOARD

Video Board LED Dimensions: 120' W x 68' H  
 Vertical LED Screen Dimensions: 15' W x 43' H







## EAST VIDEO BOARD

Video Board LED Dimensions: 88' W x 50' H  
 Vertical LED Screen Dimensions: 15' W x 25' H





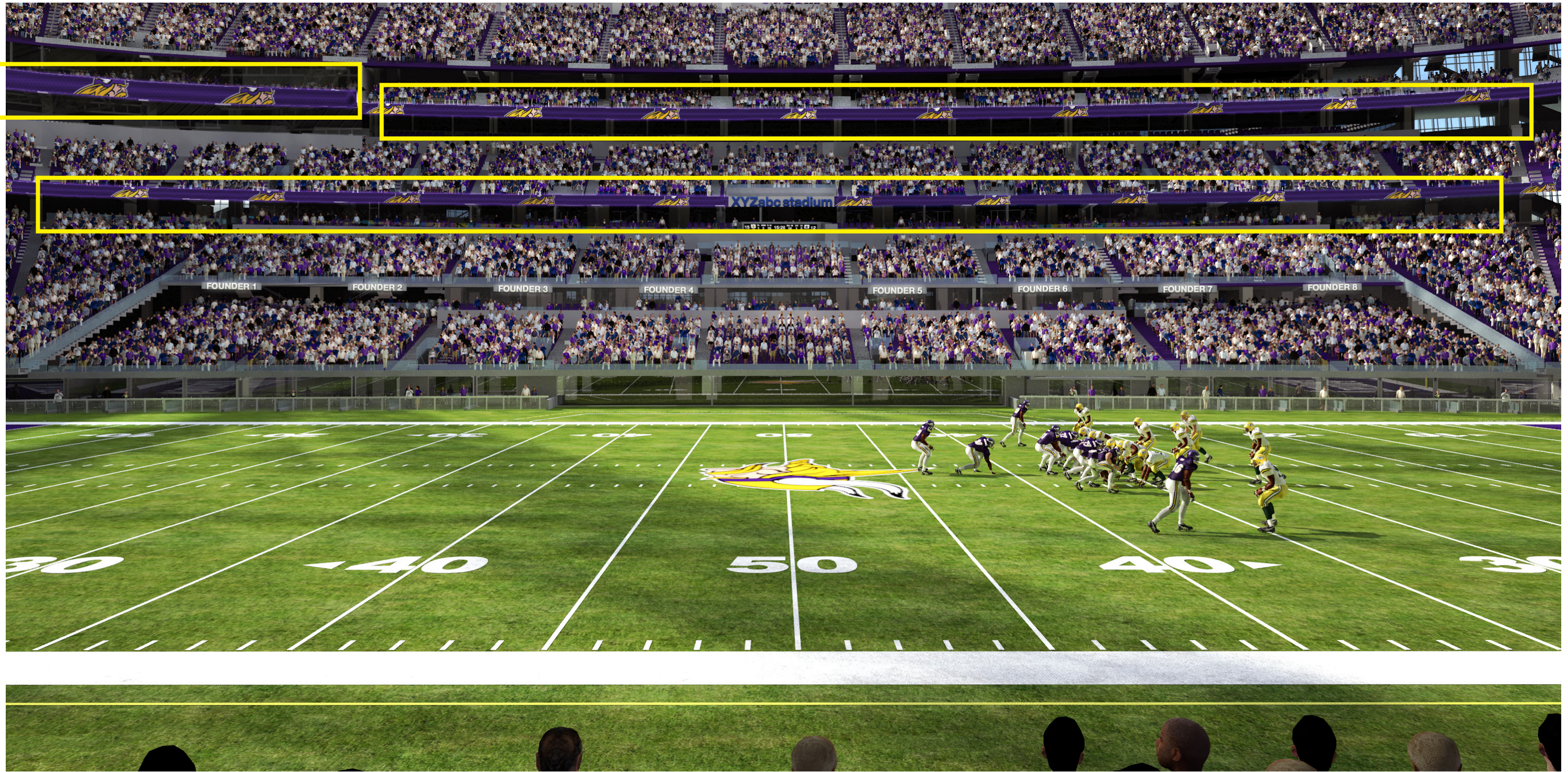


# NORTH SIDELINE FASCIA

Fascia Dimensions: Eight (8) 35' W x 4' H LED boards







## LED RIBBON

Club Level - 2' 6" Tall - 1475' Linear Ft.

Upper Concourse Level - 3' 0" Tall - 1550' Linear Ft.

Press Level Fascia - 4' 10.5" Tall - 225' Linear Ft.



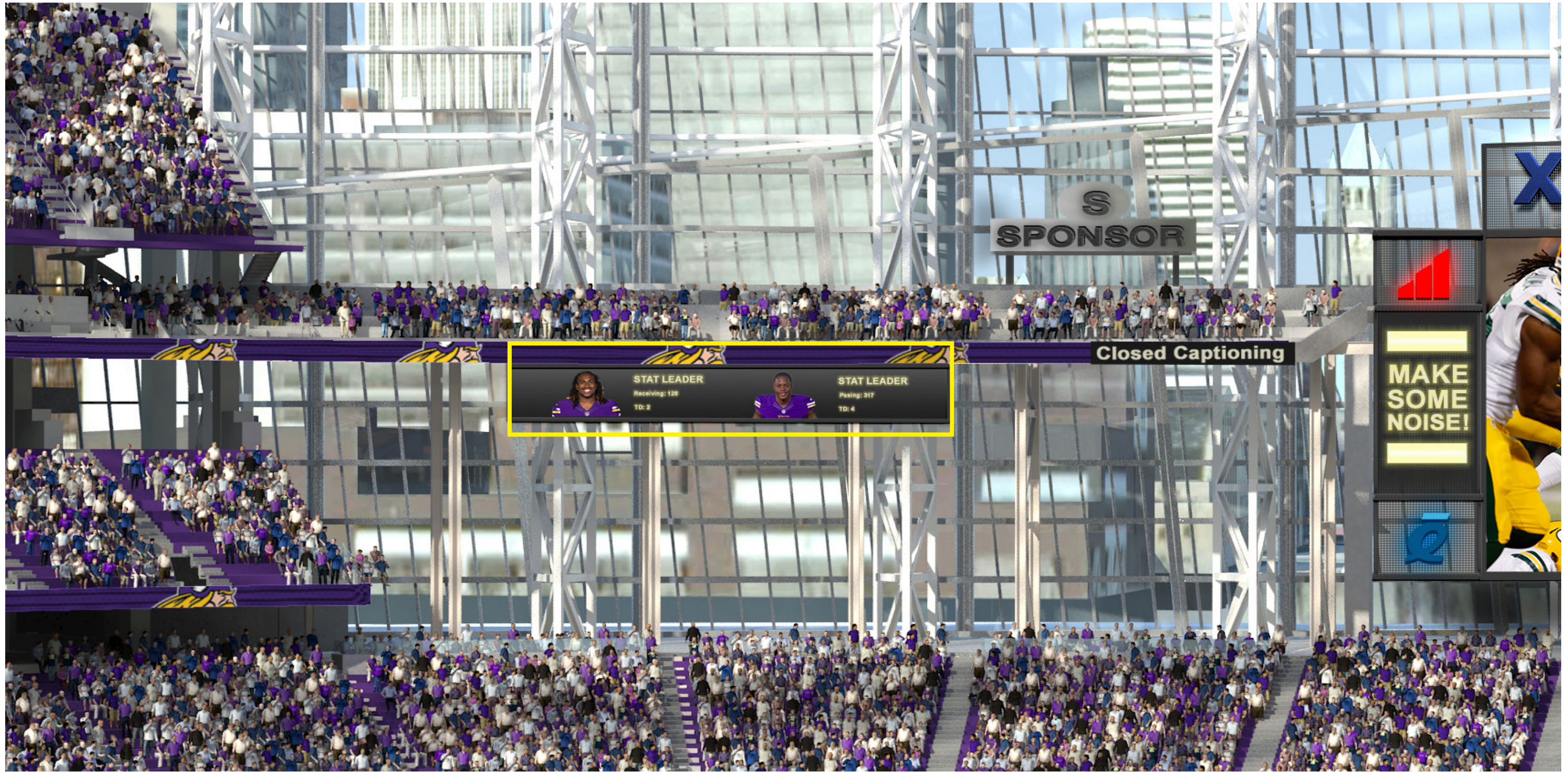




## TIME DOWN & DISTANCE

South Sideline Clock - 2' 6" Tall - 39' Linear Ft.







STAT LEADER		STAT LEADER	
	Receiving: 128 TD: 2		Passing: 317 TD: 4



## WEST PLATFORM "SKIRT"

One (1) - 64' W x 9' H LED Screen







## WEST END ZONE CLOCK

Play Clock: 4' W x 4' H  
Game Clock: 6' W x 4' H

Van Wagner





## EAST END ZONE CLOCK

Play Clock: 4' W x 4' H  
Game Clock: 6' W x 4' H







Proposed By:		Quantity	Minimum Pixel Pitch	Proposed Pixel Pitch	Width (each)		Proposed (W) Feet/Inches	Height (each) Feet/Inches	Proposed (H) Feet/Inches	Area Sq Ft. (ea)	Display Resolution		Display Unit Price	Total Extended price
					Proposed	Feet/Inches					Wide	High		
Minimum Active Dimensions														
West Main Display	Primary	1	16		120	120'-0"		68'-0"		8160.0	2286	1295	\$0.00	\$0.00
	Wings	2	16		15	15'-0"		43'-0"		645.0	285	819	\$0.00	\$0.00
	West Main Installation	1	Install										\$0.00	\$0.00
East Main Display	Primary	1	16		88	88'-0"		50'-0"		4400.0	1676	952	\$0.00	\$0.00
	Wings	2	16		15	15'-0"		25'-0"		375.0	285	476	\$0.00	\$0.00
	East Main Installation	1	Install										\$0.00	\$0.00
Fascia LED	Club Level	1	16		1475	1475'-0"		2'-6"		3687.5	28098	48	\$0.00	\$0.00
	Upper Concourse	1	16		1550	1550'-0"		3'-6"		5425.0	29527	66	\$0.00	\$0.00
	Press Level	1	16		225	225'-0"		4'-10"		1098.0	4286	92	\$0.00	\$0.00
	Fascia Installation	1	Install										\$0.00	\$0.00
Interior Sponsors	North Sponsors	8	8		35	35'-0"		4'-0"		140.0	1778	203	\$0.00	\$0.00
	West "Skirt"	1	16		28.5	64'-0"		9'-0"		456.0	868	487	\$0.00	\$0.00
	West "Skirt" Duct Covering	1				64'-0"							\$0.00	\$0.00
	Interior Sponsor Installation	1	Install										\$0.00	\$0.00
Game Clocks		6				6'-0"		4'-0"					\$0.00	\$0.00
Delay of Game Clocks		2				4'-0"		4'-0"					\$0.00	\$0.00
Back of House Game Clocks		30											\$0.00	\$0.00
Ticket Window Displays		18											\$0.00	\$0.00
Clock/Ticket Window Installation		1	Install										\$0.00	\$0.00
Graphic Package		1											\$0.00	\$0.00
Matrix & Scoring control equipment		1											\$0.00	\$0.00
Video Processing equipment		1											\$0.00	\$0.00
Payment and Performance Bond		1											\$0.00	\$0.00
Base Bid M/WBE participation %		0.00%												
Markup added to Manage OFE Installation		0.00%												
*All applicable taxes must be included in pricing														

Project Total Price \$0.00

Please Write out Total Bid Pricing :

Vendor Incentives (please describe any incentives for awarding of multiple packages or other options that may allow for a cost savings)

**Manufacturer must input exact numbers into the following Columns**

- F - Decimal Width
- H - Decimal Height
- K - Display Resolution Width
- L - Display Resolution Height
- M - Estimated Weight
- N - Pixel Density
- O - Brightness
- P-R - Current Draw
- S - Display Bid Price
- T - Processing Bid Price
- U - Annual Service Contracts



**Proposed By:**

Plaza Viking Ship LED Video Display / Sail

---

1. The Viking ship displays are designed to look like a sail filled with wind. One side will be concave and the other convex. The mesh type display is intended to be transparent so that it doesn't feel like a large video advertisement. The sign should have the ability to show graphical content as well as video from the primary control room on both sides. The sail is roughly 50'W x 40'H. All structure to support the display should be included in the proposal.

Total Cost: \$ -

Provide a narrative, drawings, etc... to best describe your solution. Include as much detail as possible.

West Prow Exterior Free-Form LED Display

---

1. The West Prow of the building will extend over the west plaza. This large surface will be the home for the free form LED that will display iconic signage as well as video. The feathering of the LED that fades into the façade is unique to the concept and should be considered in the design. No hard edges should be used in order to maintain the oval appearance. The overall display should be 70'W x 109'5"H. All additional rigging hardware and supports needed to mount the display should be included in the proposal.

Total Cost: \$ -

Provide a narrative, drawings, etc... to best describe your solution. Include as much detail as possible.

**Required Alternates**

<b>Parts Only service pricing on all equipment.</b>	Year 4	\$
	Year 5	\$
	Year 6	\$
	Year 7	\$
	Year 8	\$
	Year 9	\$
	Year 10	\$

Total Parts yrs 4-10	\$
----------------------	----

<b>Parts &amp; Labor service pricing on all equipment.</b>	Year 4	\$
	Year 5	\$
	Year 6	\$
	Year 7	\$
	Year 8	\$
	Year 9	\$
	Year 10	\$

Total P&L yrs 4-10	\$
--------------------	----

Cost to add in cable management / mounting support on the bottom of the ribbon displays to handle cabling for WIFI and AP'	\$	-
--	----	---

Proposed By:





Display Technical Specifications

Proposed by:

Proposed Display Location:	
Display Manufactured by:	
Manufacturer Model Name/Number:	
Overall Cabinet Dimensions (WxHxD):	
Active Area of Display (WxH):	
Physical Pixel Pitch:	
Perceived Pixel Pitch:	
Pixel Type (SMD/Discrete):	
Pixel Matrix of Display:	
LED Manufacturer:	
LED Lifetime Rating:	
Module Dimensions (WxH):	
Pixel Layout per module (RxC):	
Number of Modules per Display:	
Max Power Per Display:	
Average Operating Power Per Display:	
Display Weight:	
Weight of Secondary Materials needed for installation:	
Calibrated Intensity @ 6,500 K (cd/m <sup>2</sup> ):	
Horizontal Viewing Angle:	
Vertical (UP/DN) Viewing Angle:	
Contrast Ratio:	
Service Access (Front/Rear/Top):	
Cabinet Depth:	
IP Rating:	
Noise Criteria at Nearest Listeners Ear:	



**Proposed By:**

Item	Description	Cost
1	Manned Camera Package	\$ -
2	Pan/Tilt/Zoom Camera Package	\$ -
3	Wireless Camera Package	\$ -
4	Truck Fiber Transport	\$ -
5	Graphics and Video Playback Systems	\$ -
6	Video Replay Systems	\$ -
7	Primary Control Room Video Recording Package	\$ -
8	Legacy Control Room Video Playback/Recording Package	\$ -
9	NFL Related Equipment	\$ -
10	Utility Frame Synchronizers and Encoding	\$ -
11	Character Generation	\$ -
12	Closed Captioning	\$ -
13	IPTV Confidence	\$ -
14	Master Clock	\$ -
15	High Definition Production Switcher	\$ -
16	IP Based Routing Switcher System	\$ -
17	Production Video Monitoring	\$ -
18	Engineering Stations	\$ -
19	Audio for Video	\$ -
20	Terminal Equipment	\$ -
21	Keyboard Video Mouse Transport	\$ -
22	Communications	\$ -
23	Equipment LAN	\$ -
24	Time Code	\$ -
25	Audio Equipment	\$ -
26	Furniture	\$ -
	Total Equipment Cost	\$ -
27	Installation Labor	\$ -
28	Fee (Overhead & Profit)	0%

**Unit Pricing**

Item	Description	Cost
UP-01	Manned Camera Package	\$ -
UP-02	Pan/Tilt/Zoom Camera Package	\$ -
UP-03	Wireless Camera Package	\$ -
UP-04	Truck Fiber Transport Channel	\$ -
UP-05	Video Playback Server	\$ -
UP-06	Video Replay System 1080P	\$ -
UP-07	Video Replay System 4K	\$ -
UP-08	Frame Synchronizer	\$ -
UP-09	Switcher ME	\$ -
UP-10	Switcher Four Channel Clip Server	\$ -
UP-11	Router 4K SDI Gateway	\$ -
UP-12	Router 1080P SDI Gateway	\$ -
UP-13	48" Display w/ HD-SDI Signal Chain	\$ -
UP-14	4K Engineering Station	\$ -

<b>Proposed By:</b>		<b>Quantity</b>	<b>Minimum</b>
			<b>Pixel Pitch</b>
<b>Fire Club</b>	LED Display	1	2
	Fire Club Installation	1	Install
<b>Ice Club</b>	LED Display	1	2
	Ice Club Installation	1	Install
<b>Cameras, Cabling,Control,Processing</b>			
*All applicable taxes must be included in pricing			

Please Write out Total Bid Pricing :

---



Proposed	Width (each)	Proposed (W)	Height (each)	Proposed (H)	
Pixel Pitch	Feet/Inches	Feet/Inches	Feet/Inches	Feet/Inches	Display Unit Price
	Minimum Active Dimensions				
	28'-0"		9'-0"		\$1.00
					\$1.00
	28'-0"		9'-0"		\$1.00
					\$1.00
					\$2.00

Project Total Price





Total Extended price
\$1.00
\$1.00
\$1.00
\$1.00
\$2.00

\$6.00

